

L O O K B O O K  
O U T D O O R C O L L E C T I O N

 GLOSTER

TEAK, CRAFTS & INNOVATION

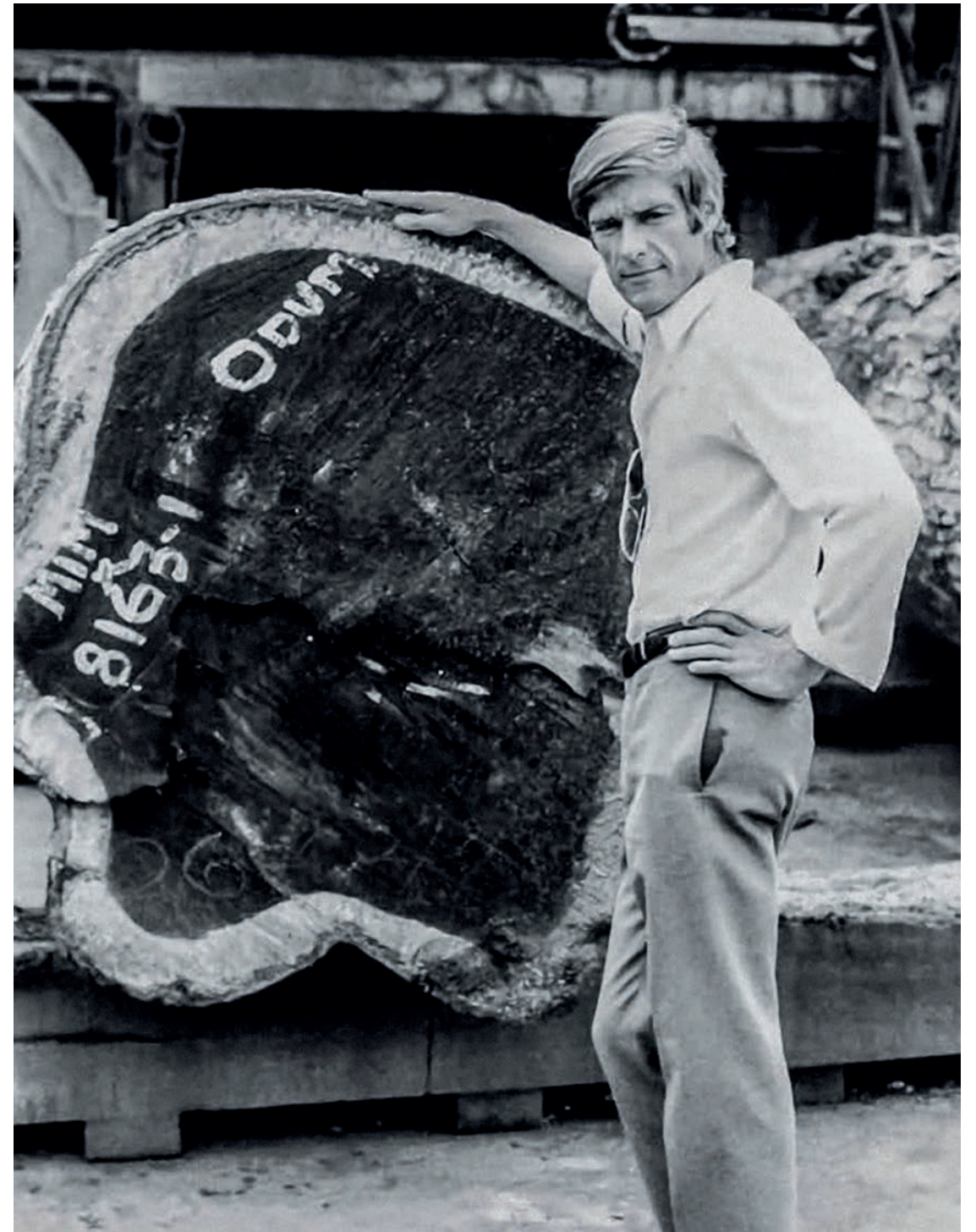
OUTDOOR COLLECTION



# H

## OUR HERITAGE

Gloster's roots can be traced all the way back to West Africa in 1960, where a band of passionate entrepreneurs and furniture makers took the first steps on a long journey. By the late 1980's, increased demand and access to plantation grown teak led us to move our factory to Indonesia. Today, the same passion, conviction and pride that launched the Gloster brand, continues to fuel our business. We may live in a different world than the one occupied by our founders, but one thing remains the same - we are furniture makers whose sole focus is to design and build the world's finest outdoor furniture.





## TEAK & PLANTATIONS

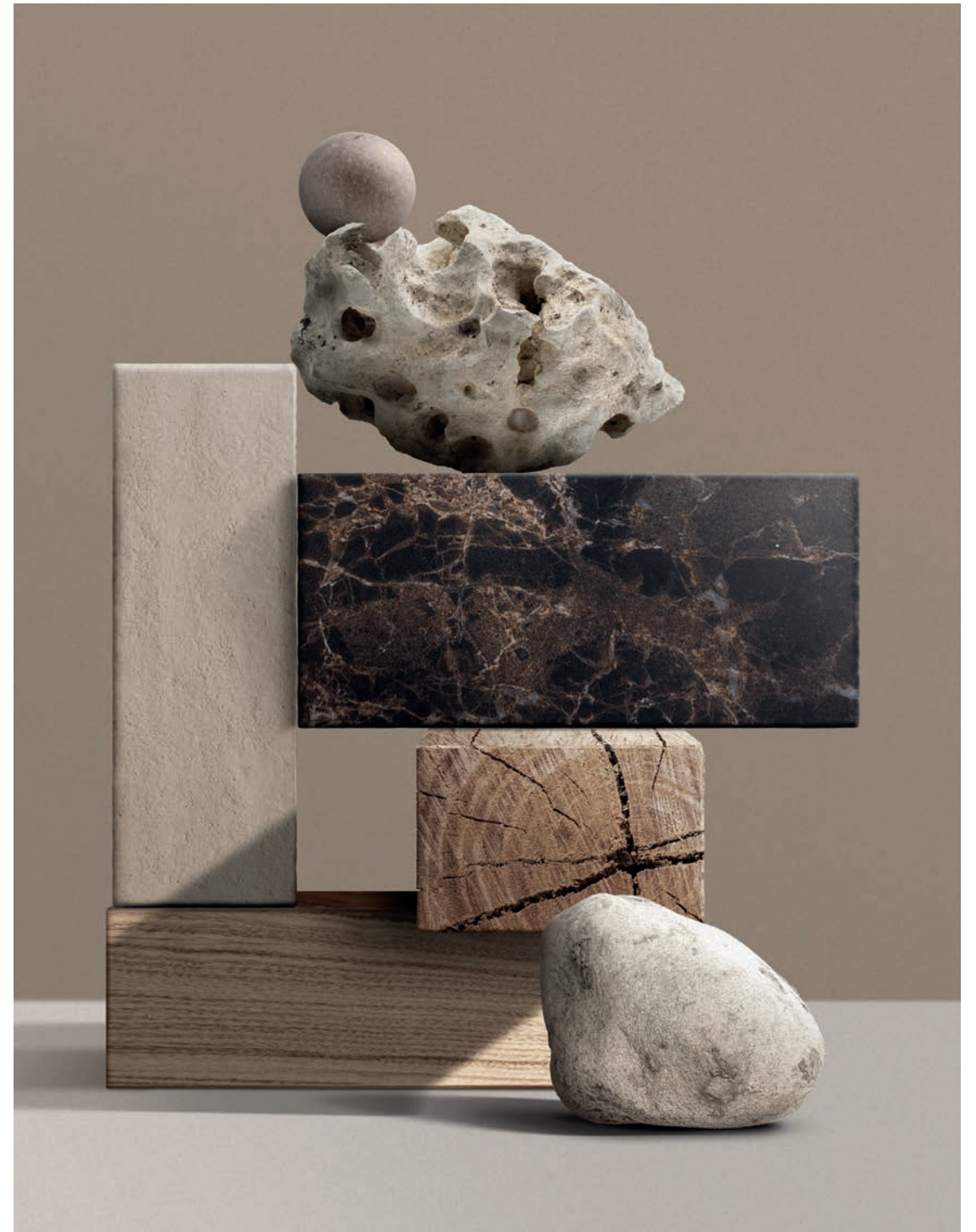
The benchmark hardwood for fine outdoor furniture for more than 700 years. With a beautiful, soft natural finish, every piece of Gloster teak originates from carefully managed plantations and is thoroughly inspected to ensure that quality endures. A close-grained hardwood with a high natural oil content, teak is exceptionally hard wearing, highly resistant to rotting and almost impervious to the effects of sun, rain, frost or snow - the first and only choice of timber for outdoor furniture.

Gloster's production of teak is characterised by our approach. We understand our resources and we know our wood. A Gloster teak tree has a lifecycle of at least 50 years - and our wood can always be traced back to its origin. We believe that our customers must be able to trust us, so we treat the world, its resources and its people with respect.

# D

## DESIGN & INSPIRATION

Of course, great manufacturing is wasted without great design. Gloster currently works with several world-renown designers to create timeless outdoor furniture. Once a concept is approved, designers work closely with the development team at our factory to further refine their designs. And even in this digital age, we insist our designers travel to and spend time at our factory so they get to know our people, our raw materials and our philosophy.





## TEAK, CRAFTS & INNOVATION

With a series of uniquely styled products, Gloster offers the opportunity to mix and match with an extensive range of diverse product collections.

From modular seating through dining tables & chairs, lounge and deco items, our collections combine sophisticated fabrics, textured powder coat finishes and of course our signature finish, plantation teak.





## SALINA

If you are yet to discover Salina, there is a delight unknown that awaits you. Raised starkly from beneath the Mediterranean Sea by volcanic activity then shaped and softened in a tumble of elements and flora for millennia, this perfect part of a small archipelago, a touch north of Sicily, is exquisitely crafted by nature. So, the inhabitants of this verdant jewel are fashioned in turn by their surroundings. Life is simple. Structure and form are defined by objectives. Texture and tone are but casual combinations of weathered wood, tousled vines, piled stone. And the ubiquitous net, so prized to deliver quicksilver shoals from daybreak crystal waters to gregarious sunset dining.

It is this little-known isle that spoke to Matteo Thun and Benedetto Fasciana when they sought inspiration for their latest Gloster collection. Their attention was drawn to elemental materials and forms of the locality, their interest piqued by a resourcefulness and sparing synonymous with Salina's inhabitants; they eschewed accepted lines and traditional style as their concept developed.





# SALINA

Salina's rustic and rugged materials are hewn, reduced and fused, refined to a point where simplicity of form infers reassuringly classic style. Then an integrated comfort delivers a contrasting opulence and promise of something truly, excitingly unique.

Four teak poles mark the extremities of the Salina collection's signature frame. Enclosed within, a teak base refined with stainless steel details is crowned with deeply inviting seat and scatter cushions. As further range components follow these cues, style and comfort are shared in balance across a sofa, corner units and chaise.







# DECK

Elegant and uniform, the linear style of Deck defines the Gloster design aesthetic. Inspired by teak decking on the fastest and finest sailing vessels of yesteryear, the simple, yet visually striking design invokes an uncompromising air of quality and craftsmanship. Arrange them any which way you find suitable, then rearrange once more. Deck lounge can be formulated as just a single module, or an infinite number for your perfect combination.





## DECK

Broad, substantial, trusty and true, a ship's deck is literally the foundation of any voyage of discovery. Perfectly engineered to bear the weight of endless possibility, the large, low and flat bases provide opportunity for endless seating combinations of unrestricted size. Weighted backrests and matching scatter cushions can be placed as you please, to suit individual preference for a truly tailor-made seating experience.





## DECK

A flat wooden surface, both long and wide, but at the same time almost transparent. Elegant, uniform and crafted from solid plantation teak, the linear style of the Deck tables defines the Gloster design aesthetic. Inspired by teak decking on the fastest and finest sailing vessels of yesteryear, the simple, yet visually striking design invokes a uncompromising air of quality and craftsmanship.







# GRID

When functionality is key and simplicity is the only design cue needed, Grid's elementary format is the perfect solution for deeply comfortable seating in a stylish world. Conceived by Danish designer Henrik Pedersen as a bridge between stark minimalist design and large scale luxury, Grid combines slim, aluminium frames powder coated in Meteor, White or Java with the elegant geometric forms of deep and comfortable seat & back cushions.

Speaking about Grid, Henrik Pedersen says; "For me, design must always have a meaning. The shape, colour and choice of materials have to complement each-other and good design is functional, beautiful and easy to understand. Experience and knowledge help, but the difference lies in how you use it. Good common sense and a passion for your craft will take you far and ultimately, this process produced Grid, which still today commands a special place in my portfolio of designs".





## GRID

With Grid, the only limiting factor is really your imagination. Available in a variety of compatible sizes, the complementary units form the basis of a totally flexible seating system where you can combine various individual elements to meet your specific needs. End units, corner units, centre units, chaises and even large-scale chill units can all be linked into an almost unlimited number of configurations. With matching side and coffee tables with slatted teak or durable ceramic tops in a variety of colours, the Grid collection screams taste and style with quiet confidence.







## GRID

Speaking about Grid, Henrik Pedersen says; "For me, design must always have a meaning. The shape, colour and choice of materials have to complement each-other and good design is functional, beautiful and easy to understand. Experience and knowledge help, but the difference lies in how you use it. Good common sense and a passion for your craft will take you far and ultimately, this process produced Grid, which still today commands a special place in my portfolio of designs".





# BORA

A combination of the tactile and the ethereal, Bora alludes to the imposing, climatic winds that buffet and ruffle the Adriatic coast. Simultaneously the name evokes a sense of the remote and the exotic, painting a path to the horizon where oceans and skies meet and continents crumble into archipelagos.

The Bora collection embraces these flights of fancy, pairing them with functional requirements to flow flawlessly into a form to be reckoned with. The rounded expression of circles in the woven backs, create a soft and inviting seating comfort. Inspiring trust and guaranteeing stability, a wide, strong stance is artfully formed from plantation teak in a peerless combination of fine craftsmanship and classic, mid-century, Scandinavian style.







## BORA

Seating for all occasions is provided by a comprehensive range of Dining Chair, Lounge Chair, Sofa, Lounger and Ottoman. All are available in two wicker combinations – either the bold and dark Umber or a lighter, warmer Sorrel colour, and incorporate luxurious seat and back cushions designed specifically for outdoor use. Although using manmade fibres, through a clever combination of individual strands of varying colour and the application of a distressed, tactile finish, Bora's woven element achieves an unquestionably natural simplicity.





# BORA

Natural organic shapes are an obvious match with the outdoor space. A combination of the tactile and the ethereal, Bora combines the fine craftsmanship of an expertly crafted teak frame with the rounded expression of circles, extended to a soft and inviting seating comfort. The tactile and visual effect of a multi coloured weave completes the look of this playful collection.





# NAVIGATOR

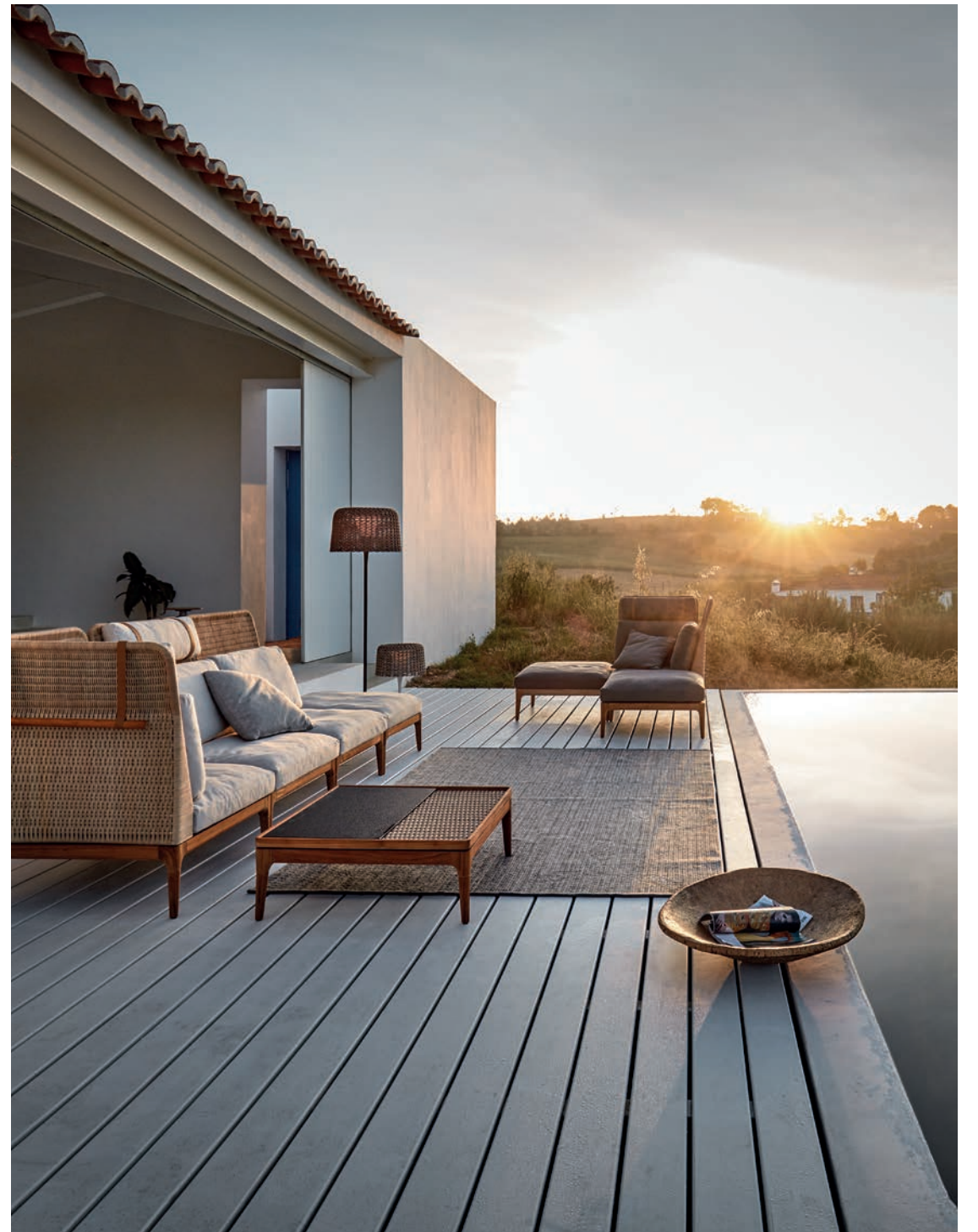
Shaped by memories of a classic era of luxurious travel when adventurers and explorers sought portable comfort as they travelled, Navigator is a contemporary interpretation of vintage campaign furniture. The inline folding X-frames are achieved with ingenious, hidden engineering and paired perfectly with both fixed and articulated, brushed stainless steel junctions - cleverly elevating heritage style to pioneering push.





# LIMA

The essence of natural and tactile materials are brought together into one, defined element in the Lima collection by Henrik Pedersen. Plantation teak, outdoor wicker and natural leather are combined in a subtle mix with nature very much in mind throughout the whole design. The variegated colour all-weather wicker features a subtle, distressed finish - giving the furniture a familiar and rustic feel. With practicality at the fore, new additions to the Lima collection offer the opportunity for generous outdoor storage and opulent presentation.





# LIMA

As an extension to the existing Lima seating collection, Lima Dining takes the same design language – one of simplicity, honesty and a deep sense of quality and genuine craftsmanship. An expression rooted in the Scandinavian tradition, where warm, natural and tactile materials are combined in a simple but aesthetic unity.







# ZENITH

As the sun's arc describes another day, fleeting clouds and spreading shadows create a patchwork of light and shade. Pushed and pulled by transient light, breezes dip and roll alternately soothing, then interrupting moments of calm. Days outdoors will always bear the weight of uncertainty. There is no perfect solution. But there is a way to move with the elements - to embrace each changing instance to its fullest.

Daringly mobile, brazenly inviting, unashamedly indulgent. Rarely has a piece of furniture appeared so unequivocally fit for purpose. Zenith marks the peak of the Gloster design aesthetic. A blend of diverse materials combined in a lounge collection that is simple, yet striking. Modern yet familiar. Luxurious yet practical.





## ZENITH

Conceived by Danish designer Henrik Pedersen, the Zenith collection consists of a stylish Lounger, matching Lounge Chair, Lounge Chair with Arms, 2-Seater Sofa and Ottoman. All pieces are based on a softly profiled tubular aluminium frame offering a perfect balance of strength and style which is finished with a resilient Meteor or White colour powder coat. Seats and backs are formed in one continuous plain from hand woven, subtly textured Wheat colour outdoor wicker and topped with luxurious partitioned seat pads available in a variety of weather resistant fabrics.





# HAVEN

Haven. The name alone suggests a hideaway and it's with only the smallest shift of consciousness one can imagine drifting in a calm bay securely cradled by an exquisitely crafted vessel. Lying beneath the sun, one hand tracing the gently curving lines of the graceful hull holding you safe on the still waters of your very own retreat. A cooling breeze invites the sun to dance across the surface of the ocean and the shimmering light signals a personal message that this tranquillity is yours alone to enjoy.





# HAVEN

Designed by German designer Sebastian Herkner with a nod to the nautical, Haven's solid teak frame combines deep, gently curving slats to create subtly rounded back and side panels, intended to envelop and enclose and create a sheltered and comforting environment in which to relax. This sense of security and comfort is further emphasised with a deep and luxurious cluster of seat cushions and back pillows.







## KAY

The backrest is unquestionably the defining statement of the Kay range. Deliberately oversized and beautifully curved for comfort, Kay embraces you as you sit offering comfort and shelter. Available in either Brindle, Copper or Harvest colour 'French Cane' style all-weather wicker combined with a delicate teak frame, Kay's lines combine timeless style with practical comfort.

The Kay collection is comprised of a two-seater sofa, an armchair, ottoman and lounger. High and low variations of the back panel are available as options and can be used to create a fully consistent level or a variation in back heights depending on how you wish to style your space.



# FERN

Inspired by the delicate fronds of a unfurling fern leaf, Fern by Sebastian Herkner is an imposing, yet cosy lounge and dining collection with a design language that harks back to nature. Combining Gloster's signature plantation teak with a soft finish outdoor rope, the enveloping, woven back rest both protects and provides the comfort and is attached to a typically Scandinavian style teak frame, which mirrors its contours and underlines the comfort aspects. Two heights of backrest give the Fern lounge items two distinct characters - a sumptuous, low back lounge chair and a more intimate high back wing chair.





## FERN

Fern features Gloster's signature plantation teak base frame married to a tough, powder coated aluminium back rest, expertly hand-woven with soft-touch, outdoor rope. Available in two different colour-ways - Meteor colour frame with Raven colour outdoor rope or White colour frame with Dune colour outdoor rope, there is both a style and a colour pallet to match every environment.





# BAY

Can you recall that sense of escape? Of finally leaning back, forgetting your worries and staring out across the water towards the setting sun? Henrik Pedersen set out to capture the feel of sitting by the coast when designing the Bay collection. The reclined position emphasises an introspective and relaxed state of mind and is intended to create a sense of being at rest in a safe-haven.

Suitable for quiet family times and day to day life for the style conscious, the vintage lines of Bay's frame are crafted from Gloster's impeccably finished teak combined with upholstered outdoor fabric cushions. A matching slatted teak coffee table and side table complete this timeless collection. Whether single statement piece or complete collection, slender minimal slings or deep seating indulgence, Bay represents a step into a simpler world. Take a moment to lie back and enjoy the view.



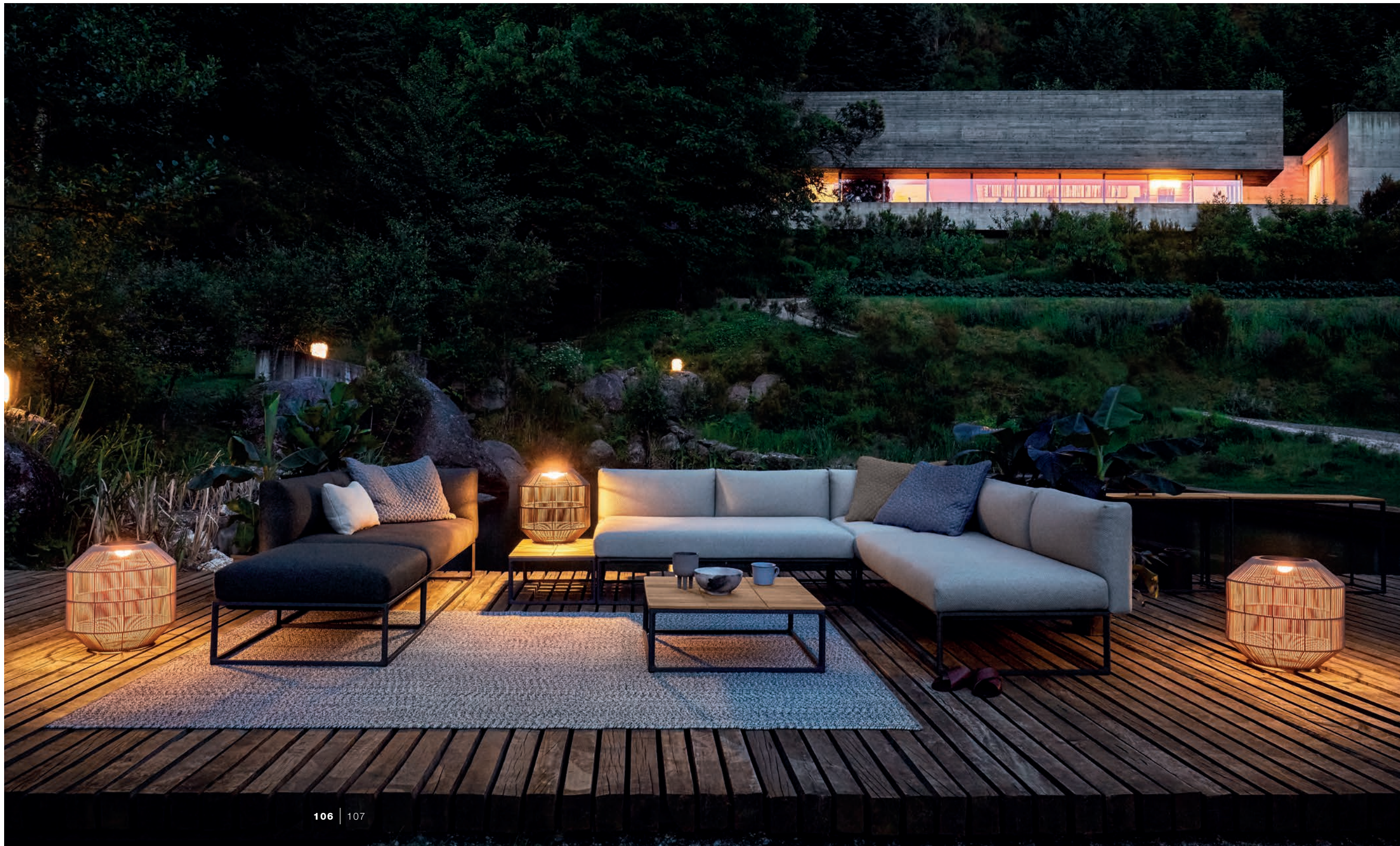




## MAYA

When the Cloud range was launched in 2010, it incorporated new thinking and technology in the design of the upholstered elements and made these as comfortable as their interior cousins. Cloud not only invented the 'outdoor lounge' category, it went on to define it. So how do you improve this? It is often easier for a designer to start again rather than take an existing design and make it better. This was the challenge; the gentle, but meaningful evolution of an existing idea. To distil and keep the spirit of the original, but refresh the aesthetic and expand its possibilities.

Maya takes the principle of the iconic Cloud collection and refines it to reflect and enhance the sophistication of the new Gloster design philosophy. Particular attention has been given to the materials and technologies used that are at the forefront of outdoor furniture design. Maya frames features an ultra-slender powder coated aluminium profile connected to cast aluminium legs. Side and back cushions are subtly revised in profile and detail and additions to the range include console tables and planters that allow for a series of living landscapes to be created outdoors.





## MISTRAL



An elegant combination of essential materials, Mistral is comprised of a tapered plantation teak platform supported by gently curving cast aluminium legs. Stylish, upholstered cushion pads provide luxurious comfort with a Koala colour, distressed finish outdoor wicker back panels to complete the look.



# SARANAC

When designing Saranac, Mark Gabbertas imagined a design that combined exceptional comfort with an enduring aesthetic. A design approach which seduced rather than shouted, that one would feel at ease with immediately, and which could continue to charm for years.

Showcasing a solid teak frame with a gentle nod to mid-century influence, Saranac's distinctly contemporary lines please the eye from all angles allowing the collection to appear equally at home in spaces of varying size

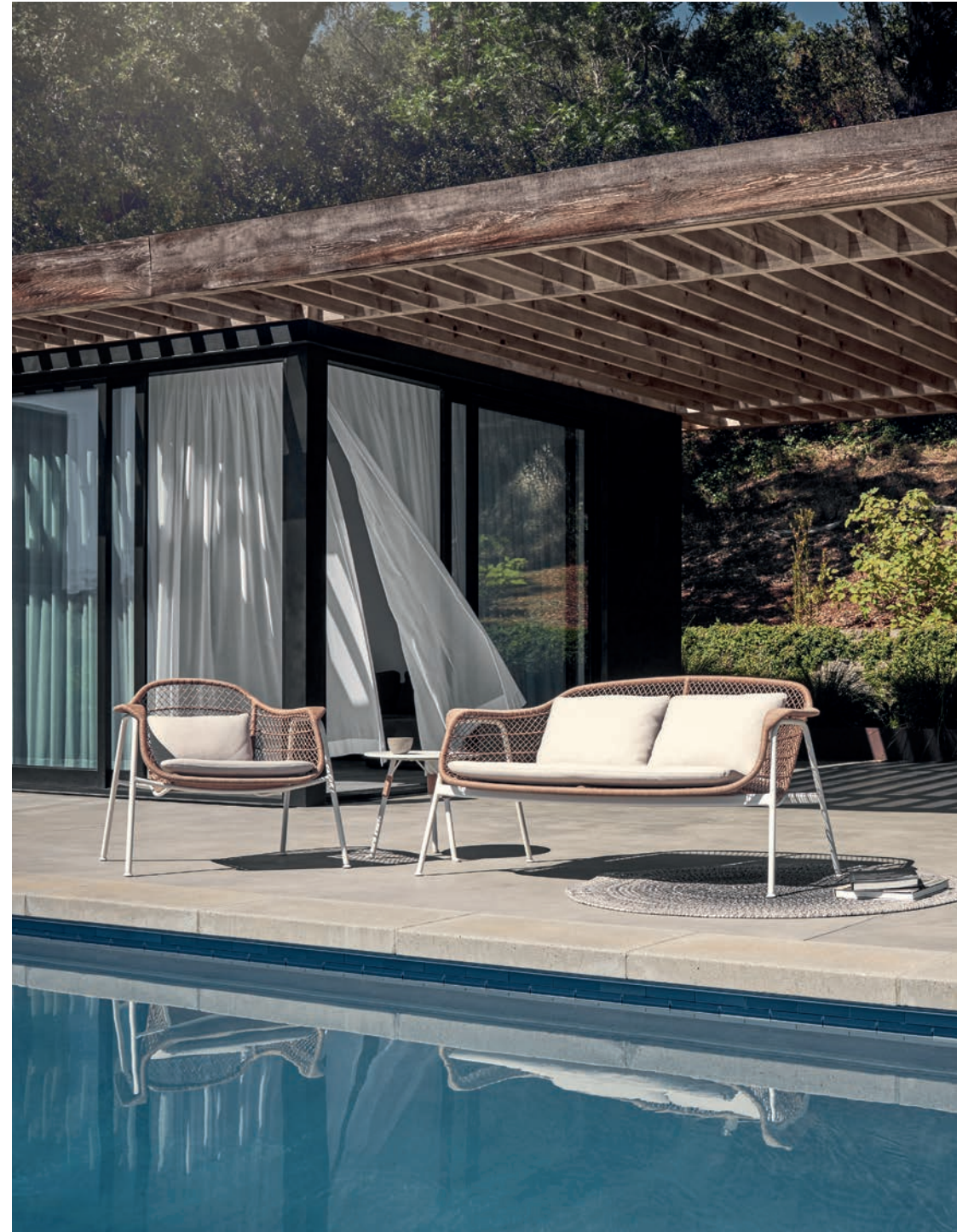




# FRESCO

Twinkling lights pierce a fading sunset on the Riviera. Light and mist vie for dominion of silvery Malibu dawns. Black basalt cobbles radiate warmth as street-life spills into the twilight of a Rome evening. From early in the 1960's, these locations have shared something unique. A certain light, an air, a 'joie de vivre' that captured the imagination of early pioneers of design and experience and continues to draw those with an appetite for refinement and exploration today.

Designed by Matteo Thun and Benedetto Fasciana, Fresco embraces this spirit and style, re-invigorating it with new materials for the current generation of sun seekers and socialites. Combining all of the chic of yesteryear with the benefits of environmentally friendly processes, durable yet comfortable and practical materials and meticulously handcrafted detail.







## ARCHI

Scandinavian design meets shaker. This trans-Atlantic concept leaps creative boundaries, combining notes of mid-century architecture and a minimalist aesthetic. At home in any contemporary or classic space, Archi cleverly combines two elemental materials - outdoor rope and Gloster's signature teak, to produce furniture that is as perfectly refined as it is striking.







## CARVER

Designer Henrik's statement is to the point: "In the same way that an artist carves in stone or wood to create a unique form, the same way of thinking has been applied to the Carver tables, like pieces hewn from a solid block." It's easy to see this inspiration... where the cross-rail and legs have been subtly sculpted it doesn't take much to imagine the space between being solid before the legs and frame are skilfully cut with delicate angles.





## SWAY

The combination of tactile woodwork, and the super-slim expression of a soft textile sling, makes for high comfort without any compromises. Visually strong enough to stand alone, but equally suited to a larger arrangement, the combination of wood and metal, makes Sway visually versatile. A match for both wood, stone or metal tables in any architectural setting.





# SPLIT

The legs of the Split table have a very characteristic look with an inverted 'Y' construction and tapering form, which emphasises a light and subtle connection to the ground. The uneven cutting of the table top slats adds an organic look, whilst tricking the eye with a visual surprise.







## GLOSTER RAW™

In normal mass production, timber is regulated, ordered, standardised to conform to strict manufacturing parameters. But with the Raw concept, we celebrate the unpredictable and reverse the irregularity of nature. Raw furniture proudly displays every growth ring, every knot and every graceful ebb and flow of the wood grain formed as each of Gloster's plantation grown teak trees mature.







## RAW

As with our own fingerprints, so every teak tree is one of a kind. Even within the managed plantation environment, no two trees share the same ground or reach for the light in the same way and thus, each grows and matures in its own unique way with the natural variations and irregularities that give timber its inherent appeal.





# KASHA

The obvious match for any rounded or soft dining collection, the soft lines and natural tones of Kasha's rounded ceramic bases combine perfectly with solid, plantation teak table tops. Eye-catching and inspiring, these striking dining tables beautifully reflect light across their soft, round surfaces while adding character to any outdoor space.



# AMBIENT SOL

From daybreak to dusk, we are illuminated, comforted and inspired by our nearest star. An imposing disc, its appearance beyond the horizon is synonymous with positivity, growth and new beginnings. Its gleaming arc has inspired awe since time began and as its daily cycle nears completion, the world is united in appreciation of its beauty.

Like its solar namesake, Sol's presence heralds a wonderful day ahead. But in a narrative shift, as the day lengthens, Sol only shines brighter. A stylish and dramatic shade by day, a beautifully integrated LED light unit provides subtle illumination as evening approaches and the shadows fade into night.



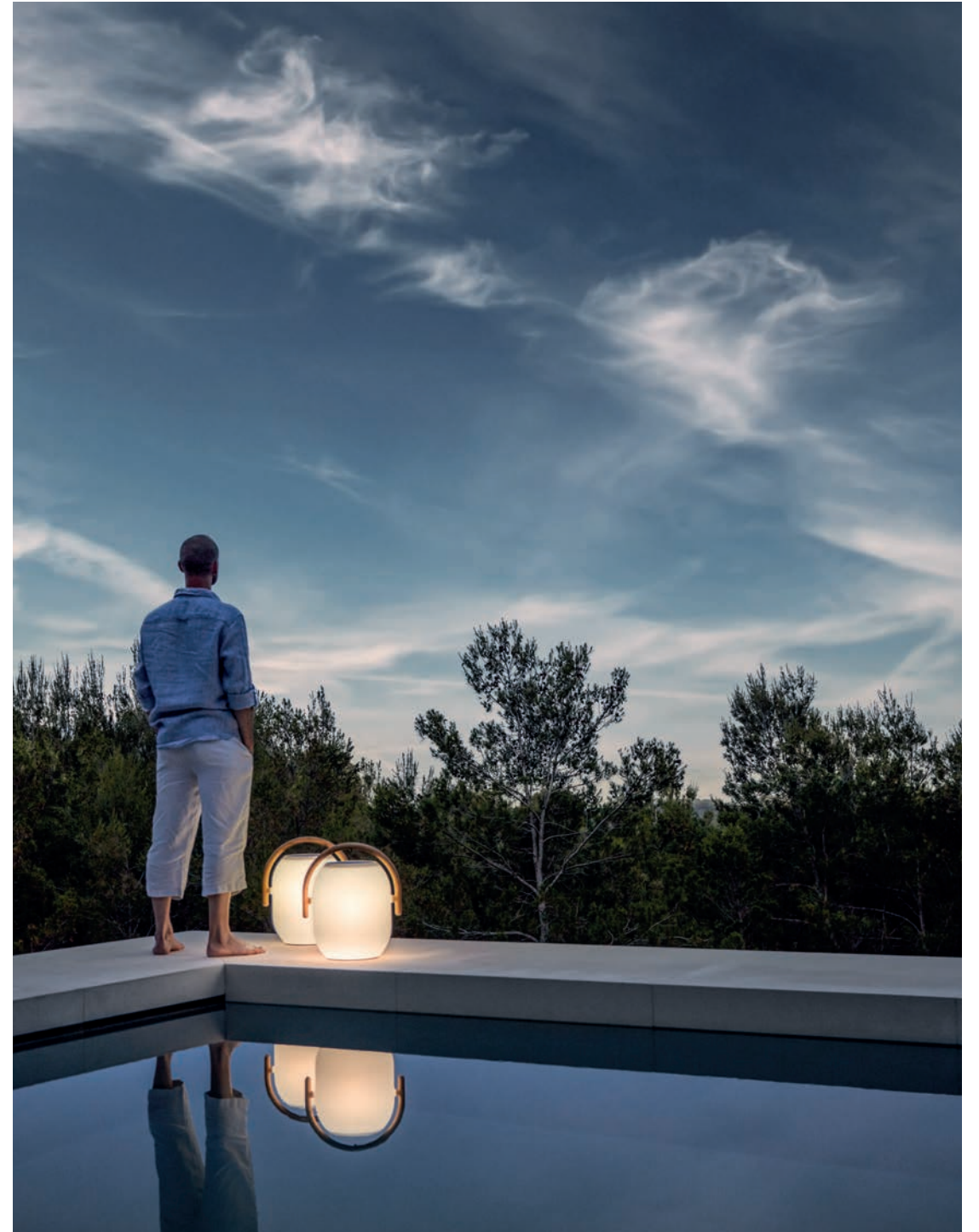


# AMBIENT COCOON

Enjoy outdoor living even after the sun goes down. Portable, remote controlled illumination with style, but without strings. Charge during the day and use at night to create the perfect mood.

Mimicking the perfect texture and symmetry of silk cocoons, these minimal and delicate looking lanterns are deceptively tough. Manufactured from modern plastics and combined with a striking solid teak handle of almost agricultural purity, these (solar LED) lights are as much about design as they are about illumination.

Asked about the design influences, designer Henrik Pedersen says "My path in design has led me through many parts of the world, many cultures... Light and warmth are always principal parts of the best social environments and the most modest of devices are often the most effective. Here I combine the worlds of simplicity and light to achieve beautiful background illumination".





# AMBIENT

## PEBBLE & NEST

The satin finish of their marbled, natural stone bases in Carbon or Fire pairs perfectly with the subtle texture of the resilient Meteor or Terracotta powder coated surface of their gently curving aluminium shades. But these characters hide a secret; with the tactile appearance and resilient constitution of their namesake Pebble, they really come to life as evening approaches.

Inspired by the precise designs of the weaver bird, these nest like suspended lanterns gently rotate and sway in the evening breeze. As the night draws in, the soft light shining through the detailed weave throws dancing shadows as the setting sun shimmers through the leaves.







# AMBIENT LINE

Elegant and precious. Using a mouth-blown, smoked glass cylinder with retro styled ribbed glass detailing and a cast metal frame, Ambient Line by Sebastian Herkner is a classical solution to portable outdoor lighting.





## AMBIENT MESH

Ambient Mesh by Henrik Pedersen hints to rustic origins. Here, the latticework of woven shades in a variety of sizes and colours, paints a subtle pattern in the dark - breaking up straight lines and creating a whole new set of outdoor decorations.

# BLOCK

Crafted by bonding staves of solid, plantation teak together into a sturdy structure, Block features a hard-wearing and visually striking surface of end-grain squares.





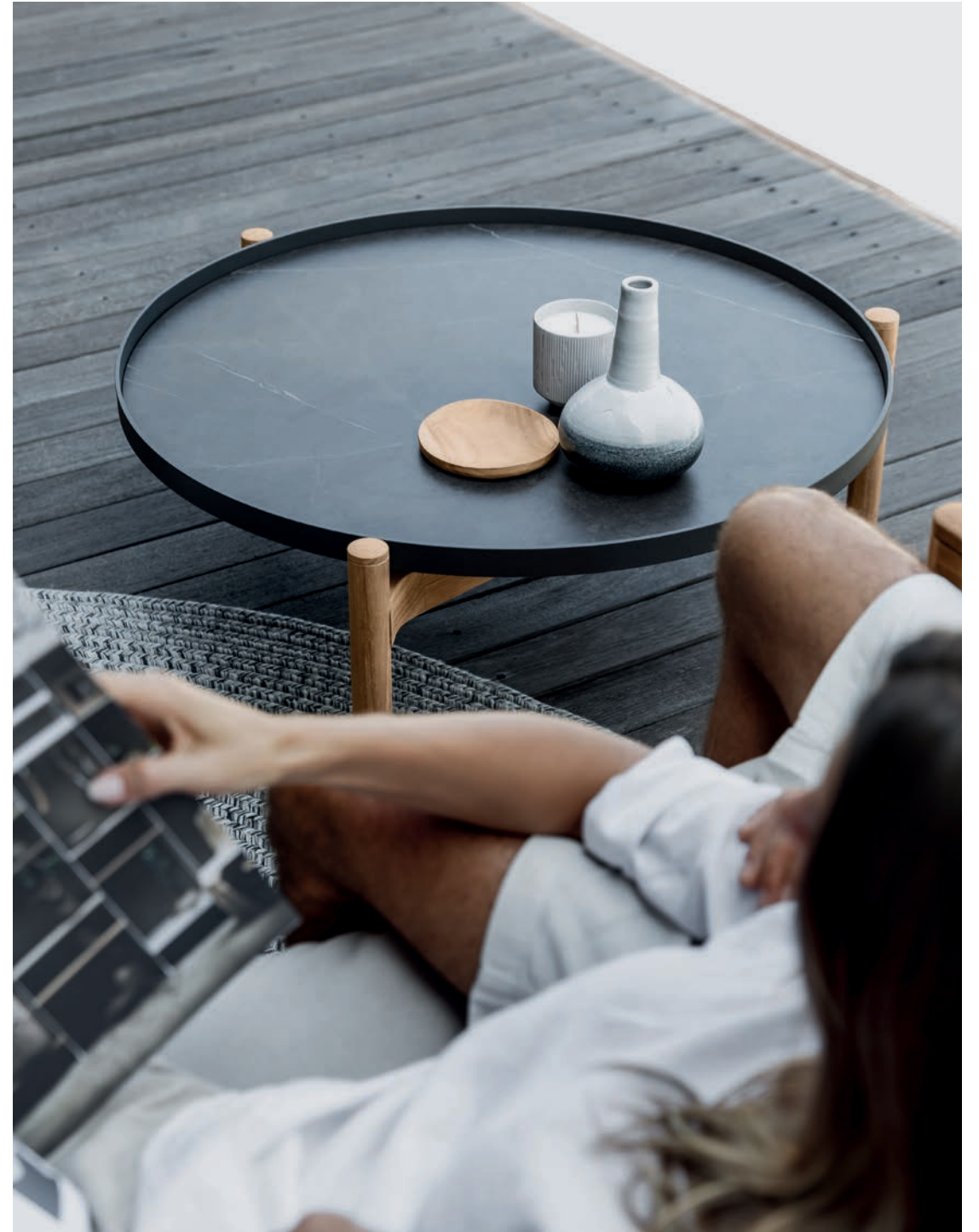
## COSO

Beautiful and tactile ceramic is the foundation of the Coso collection. The striking contrast between a rustic natural ceramic surface and a deep glaze with natural light reflections, becomes a playful contrast, that can be emphasized further by the mixing of the three different, earthy colours. To complete the aesthetic, a natural, warm teak top is removable – making the table both functional and charming at the same time.



# SEPAL

The forms of the natural world have always provided motivation for designers. The Sepal collection finds its inspiration in the giant floating water lilies that somehow look as though they were engineered by a human hand. With an upturned edge, these can form pads which gently intermingle and create their own pattern on the water. The tables use a ceramic top, edged in powder coated aluminium, which sits on a simple, but beautifully detailed, equilateral teak frame. This pure geometry makes the Sepal table extremely versatile and able to be paired with a variety of Gloster collections. It also allows the two sizes of table when used together to overlap and suggest in turn their own natural rhythm.





## BELLS / ARBOR

The inspiration for Bells is almost too obvious - two bells joined together to make up the shape of this iconic side table. The organic and fluid lines make an eye-catching addition to any outdoor area.

Inspired by the elegance and precision of engineering components, Arbor is a versatile occasional table. The design itself is deceptively simple and is engineered from a number of perfectly machined solid teak parts, which are turned to a perfect radius and artfully finished with crisp, vertical groove detailing.



## BLOW

Bring sophisticated glazes in subtle hues to your life outdoors. The soft lines and natural tones of these beautifully rounded ceramic bases combine perfectly with solid, natural teak table tops. Eye-catching and inspiring, these accent pieces beautifully reflect light across their soft, round surfaces and compliment any item in the Gloster range while adding character to any outdoor space.





## GARDEN SHOWER

Outdoor living and cool, refreshing water goes together and the new Deco Garden Shower offers exactly this. Free placement due to the teak base and a pleasant surface to put your feet on. Always nice to the touch, Teak is the perfect choice for this interaction, because it's never hot in the sun, and never cold in the shade. The teak base is combined with a clear and defined design for the frame- based on lower and upper rings, connected by one single straight line. To finish the design, a shower head in warm, polished brass colour is a subtle reference to the real solar disc above.



# FIRE BOWL

Like moths to the light, we are all drawn towards a flickering flame. As the day draws to a close and the temperature drops, kick back and relax with friends and family - a fire bowl creating the perfect focal point to enjoy the setting sun whilst enjoying the warmth of good company.



PRODUCTS  
TEXTILES  
MATERIALS

SPECS

WHEN CHOOSING EXACTLY THE RIGHT OUTDOOR FURNITURE FOR YOUR PARTICULAR NEEDS, FUNCTION IS JUST AS IMPORTANT AS STYLE. IN THE FOLLOWING PAGES WE HAVE LISTED BASIC SPECIFICATIONS FOR ALL OUR PRODUCTS, PLUS DETAILS OF MATERIALS AND FABRICS TO HELP YOU PLAN YOUR SELECTIONS IN DETAIL. FURTHER TECHNICAL INFORMATION, INCLUDING DOWNLOADS AND CARE & MAINTENANCE INSTRUCTIONS ARE AVAILABLE ON OUR WEBSITE [WWW.GLOSTER.COM](http://WWW.GLOSTER.COM)

# 180 DINING / LOUNGE

DESIGNER · HENRIK PEDERSEN · DENMARK



STACKING CHAIR WITH ARMS

W · 63 D · 57 H · 84

Powder coated aluminium frame.  
Ferrari sling seat & back.  
Frame / Sling Colours : Meteor / Charcoal, White /  
White or Java / Sepia



STACKING CHAIR WITH TEAK ARMS

W · 63 D · 57 H · 84

Powder coated aluminium frame.  
Natural finish teak arms.  
Sling seat & back.  
Frame / Sling Colours : Meteor / Charcoal, White /  
White or Java / Sepia



STACKING LOUNGER WITH ARMS

W · 80 L · 206 H · 98

Powder coated aluminium frame.  
Ferrari sling seat & back.  
4 reclining back positions.  
Frame / Sling Colours : Meteor / Charcoal, White /  
White or Java / Sepia



89cm FIRE BOWL

D · 89 H · 33

Heat resistant, Jet colour powder coated 6mm mild  
steel frame.  
Adjustable ventilator/ash tray.



135cm FIRE BOWL

D · 135 H · 41

Heat resistant, Jet colour powder coated 6mm mild  
steel frame.  
Adjustable ventilator/ash tray.

# ACCESSORIES

DESIGNER · HENRIK PEDERSEN · DENMARK



GARDEN SHOWER

W · 93 D · 100 H · 233

Meteor colour powder coated aluminium frame.  
Slatted, natural finish teak platform.  
Polished brass finish stainless steel fittings.  
Black rubber water hose available as optional  
accessory.



STORAGE CHEST

W · 139 D · 75 H · 79

Natural finish teak frame & top.  
Removable sling base shelf.  
Lockable, gas strut assisted lid.



ARBOR SIDE TABLE

D · 34 H · 42.5

Natural finish teak.



LANTERN

W · 35 D · 35 H · 43

Natural finish teak frame with polyethylene shade.  
Meteor powder coated stainless steel carrying handle.  
Integral, mains power only rechargeable LED light unit.  
Supplied with infrared remote control with 8 light  
output settings.



COCOON

W · 31 D · 40 H · 46

Polyethylene shade with natural finish teak handle.  
Supplied with solar & mains power rechargeable LED  
light unit and radio frequency remote control with 8  
light output settings.  
Supplied with 2.5m hanging wire.



RAY

W · 39 D · 39 H · 68

Natural finish teak frame with natural colour leather  
carrying handle.  
Supplied with solar & mains power rechargeable LED  
light unit and radio frequency remote control with 8  
light output settings.

# AMBIENT LANTERN / COCOON / RAY LIGHTING

DESIGNER · HENRIK PEDERSEN · DENMARK

# AMBIENT MESH LIGHTING

DESIGNER · HENRIK PEDERSEN · DENMARK



TALL LANTERN

D · 51 H · 176

Natural finish teak & Meteor colour powder coated aluminium frame.  
Carob colour, woven all-weather wicker shade.  
Supplied with solar & mains power rechargable LED light unit and radio frequency remote control with 8 light output settings.



TALL LANTERN

D · 51 H · 176

Natural finish teak & White colour powder coated aluminium frame.  
Sorrel colour, woven all-weather wicker shade.  
Supplied with solar & mains power rechargable LED light unit and radio frequency remote control with 8 light output settings.



SMALL LANTERN

D · 41 H · 65

Natural finish teak & Meteor colour powder coated aluminium frame.  
Carob colour, woven all-weather wicker shade.  
Supplied with solar & mains power rechargable LED light unit and radio frequency remote control with 8 light output settings.



SMALL LANTERN

D · 41 H · 65

Natural finish teak & White colour powder coated aluminium frame.  
Sorrel colour, woven all-weather wicker shade.  
Supplied with solar & mains power rechargable LED light unit and radio frequency remote control with 8 light output settings.



LARGE PENDANT LAMP

D · 51 H · 33

Carob colour, woven all-weather wicker shade.  
Supplied with solar & mains power rechargable LED light unit and radio frequency remote control with 8 light output settings.  
Supplied with 2.5m hanging wire.



LARGE PENDANT LAMP

D · 51 H · 33

Sorrel colour, woven all-weather wicker shade.  
Supplied with solar & mains power rechargable LED light unit and radio frequency remote control with 8 light output settings.  
Supplied with 2.5m hanging wire.



EXTRA LARGE PENDANT LAMP

D · 79 H · 38

Carob colour, woven all-weather wicker shade.  
Supplied with solar & mains power rechargable LED light unit and radio frequency remote control with 8 light output settings.  
Supplied with 2.5m hanging wire.



EXTRA LARGE PENDANT LAMP

D · 79 H · 38

Sorrel colour, woven all-weather wicker shade.  
Supplied with solar & mains power rechargable LED light unit and radio frequency remote control with 8 light output settings.  
Supplied with 2.5m hanging wire.

## AMBIENT LINE LIGHTING

DESIGNER · SEBASTIAN HERKNER · GERMANY



SMALL GLASS LANTERN

D · 22 H · 37

Meteor colour powder coated aluminium frame.  
Grey colour, reeded glass shade.  
Integral, solar & mains power rechargeable LED light unit. Supplied with radio frequency remote control with 8 light output settings.

## AMBIENT NEST LIGHTING

DESIGNER · HENRIK PEDERSEN · DENMARK



NEST

W · 45 D · 45 H · 58

Fawn colour woven all-weather wicker over powder coated stainless steel frame.  
Supplied with solar & mains power rechargeable LED light unit and radio frequency remote control with 8 light output settings.  
Supplied with 2.5m hanging wire.



NEST

W · 45 D · 45 H · 58

Steel colour woven all-weather wicker over powder coated stainless steel frame.  
Supplied with solar & mains power rechargeable LED light unit and radio frequency remote control with 8 light output settings.  
Supplied with 2.5m hanging wire.

## AMBIENT PEBBLE LIGHTING

DESIGNER · HENRIK PEDERSEN · DENMARK



PEBBLE

D · 16 H · 30

Carbon colour solid stone with outdoor leather base plate. Meteor colour powder coated aluminium & polyethylene shade.  
Natural colour leather, anti-scratch disc on base.  
Supplied with 2x solar & mains power rechargeable LED light units and radio frequency remote control with 8 light output settings.



PEBBLE

D · 16 H · 30

Fire colour solid stone with outdoor leather base plate. Terracotta colour powder coated aluminium & polyethylene shade.  
Natural colour leather, anti-scratch disc on base.  
Supplied with 2x solar & mains power rechargeable LED light units and radio frequency remote control with 8 light output settings.

## AMBIENT SOL PARASOL / LIGHTING

DESIGNER · HENRIK PEDERSEN · DENMARK



SOL PARASOL / LED LIGHT

D · 220 H · 231

Meteor colour powder coated aluminium frame.  
Available in either freestanding version with 50kg base or inground / concrete fixed version.  
Wheat colour, woven all-weather wicker canopy.  
Mains power only rechargeable LED light unit.  
Radio frequency remote control with 8 light output settings.

# ARCHI LOUNGE / DINING

DESIGNER · HENRIK PEDERSEN · DENMARK



LOUNGE CHAIR

W · 86 D · 84 H · 82

Natural finish teak frame.  
Wrapped back panel in Raven colour outdoor rope.  
Fife Granite outdoor fabric seat & back cushions included.



DINING CHAIR WITH ARMS

W · 64 D · 58 H · 80

Natural finish teak frame.  
Wrapped back panel in Raven colour outdoor rope.  
Fife Granite outdoor fabric seat cushion included.



LOUNGE CHAIR

W · 86.5 D · 93.5 H · 72

Natural finish teak frame.  
Ferrari sling back panel.  
Outdoor fabric seat & back cushions included.



OTTOMAN

W · 72.5 D · 67.5 SH · 43

Natural finish teak frame.  
Outdoor fabric seat cushion included.



LOUNGER

W · 78 L · 205 H · 109

Natural finish teak frame.  
Outdoor fabric seat & back cushion included.  
4 reclining back positions.



2-SEATER SOFA

W · 156 D · 93.5 H · 72

Natural finish teak frame.  
Ferrari sling back panel.  
Outdoor fabric seat & back cushions included.



3-SEATER SOFA

W · 225 D · 93.5 H · 72

Natural finish teak frame.  
Ferrari sling back panel.  
Outdoor fabric seat & back cushions included.



RECLINING CHAIR

W · 70 D · 116 H · 102

Natural finish teak frame.  
Ferrari sling seat & back panel.  
4 reclining back positions.  
Fabric headrest cushion included.

# BELLS SIDE TABLES

DESIGNER · HENRIK PEDERSEN · DENMARK



SIDE TABLE

D · 40 H · 50.5

Meteor colour powder coated aluminium frame.  
Natural finish teak table top.  
Ice Bucket Insert & Tray Insert available as optional accessories.



SIDE TABLE

D · 40 H · 50.5

White colour powder coated aluminium frame.  
Natural finish teak table top.  
Ice Bucket Insert & Tray Insert available as optional accessories.



SIDE TABLE

D · 40 H · 50.5

Java colour powder coated aluminium frame.  
Natural finish teak table top.  
Ice Bucket Insert & Tray Insert available as optional accessories.



COFFEE TABLE

W · 63 L · 126 H · 39

Natural finish teak frame & slatted table top.



SIDE TABLE

W · 63 L · 63 H · 39

Natural finish teak frame & slatted table top.



FOOTSTOOL

W · 70 D · 59.5 H · 40

Natural finish teak frame.  
Ferrari sling seat panel.

# BLOW SIDE TABLES

DESIGNER · HENRIK PEDERSEN · DENMARK



LOW SIDE TABLE

D · 42 H · 46.5

Coffee colour glazed ceramic base.  
Natural finish teak table top.



LOW SIDE TABLE

D · 42 H · 46.5

Emerald colour glazed ceramic base.  
Natural finish teak table top.



LOW SIDE TABLE

D · 42 H · 46.5

Smoke colour glazed ceramic base.  
Natural finish teak table top.



LOW SIDE TABLE

D · 42 H · 46.5

Clay colour glazed ceramic base.  
Natural finish teak table top.

# BLOW SIDE TABLES

DESIGNER · HENRIK PEDERSEN · DENMARK



HIGH SIDE TABLE

D · 36 H · 52.5

Coffee colour glazed ceramic base.  
Natural finish teak table top.



HIGH SIDE TABLE

D · 36 H · 52.5

Emerald colour glazed ceramic base.  
Natural finish teak table top.



HIGH SIDE TABLE

D · 36 H · 52.5

Smoke colour glazed ceramic base.  
Natural finish teak table top.



HIGH SIDE TABLE

D · 36 H · 52.5

Clay colour glazed ceramic base.  
Natural finish teak table top.

# BLOCK COFFEE & SIDE TABLES

DESIGNER · HENRIK PEDERSEN · DENMARK



31.5cm SQUARE SIDE TABLE

W · 31.5 D · 31.5 H · 46

Natural finish, exposed end-grain teak.  
Recessed carrying handles on two sides.



63cm SQUARE COFFEE TABLE

W · 63 D · 63 H · 36

Natural finish, exposed end-grain teak.  
Recessed carrying handles on two sides.



38cm ROUND SIDE TABLE

D · 38 H · 45

Natural finish, exposed end-grain teak.  
Recessed carrying handles on two sides.



62.5cm ROUND COFFEE TABLE

D · 62.5 H · 35

Natural finish, exposed end-grain teak.  
Recessed carrying handles on two sides.

# BORA LOUNGE / DINING

DESIGNER · HENRIK PEDERSEN · DENMARK



LOUNGE CHAIR

W · 97.5 D · 97 H · 73.5

Natural finish teak frame.  
Woven all-weather wicker seat & back panel.  
Outdoor fabric seat & back cushion included.  
Wicker Colours : Sorrel / Umber



OTTOMAN

W · 85 D · 69 H · 44

Natural finish teak frame.  
Woven all-weather wicker seat panel.  
Outdoor fabric seat & back cushion included.  
Wicker Colours : Sorrel / Umber



2-SEATER SOFA

W · 160 D · 95.5 H · 73.5

Natural finish teak frame.  
Woven all-weather wicker seat & back panel.  
Outdoor fabric seat & back cushion included.  
Wicker Colours : Sorrel / Umber



LOUNGER

W · 99 L · 175 H · 92

Natural finish teak frame.  
Woven all-weather wicker seat & back panel.  
Outdoor fabric seat & back cushion included.  
Wicker Colours : Sorrel / Umber



DINING CHAIR

W · 70.5 D · 63.5 H · 88.5

Natural finish teak frame.  
Woven all-weather wicker seat & back panel.  
Outdoor fabric seat cushion included.  
Wicker Colours : Sorrel / Umber

# CARVER DINING

DESIGNER · HENRIK PEDERSEN · DENMARK



220cm DINING TABLE

W · 99.5 L · 220 H · 73

Powder coated aluminium frame.  
Natural finish slatted teak table top.  
Without parasol hole. Seats 8.  
Frame Colours : Meteor / White / Java



220cm DINING TABLE

W · 99.5 L · 220 H · 73

Powder coated aluminium frame.  
One piece ceramic table top.  
Without parasol hole. Seats 8.  
Frame Colours : Meteor / White / Java  
Ceramic Tops : Nero / Bianco / Emperor



280cm DINING TABLE

W · 99.5 L · 280 H · 73

Powder coated aluminium frame.  
Natural finish slatted teak table top.  
Without parasol hole. Seats 10.  
Frame Colours : Meteor / White / Java



280cm DINING TABLE

W · 99.5 L · 280 H · 73

Powder coated aluminium frame.  
One piece ceramic table top.  
Without parasol hole. Seats 10.  
Frame Colours : Meteor / White / Java  
Ceramic Tops : Nero / Bianco / Emperor

# COSO COFFEE & SIDE TABLES

DESIGNER · HENRIK PEDERSEN · DENMARK



COFFEE TABLE

D · 48 H · 40.5

Earth colour glazed ceramic base.  
Natural finish teak table top.



COFFEE TABLE

D · 48 H · 40.5

Iron colour glazed ceramic base.  
Natural finish teak table top.



COFFEE TABLE

D · 48 H · 40.5

Sand colour glazed ceramic base.  
Natural finish teak table top.



SIDE TABLE

D · 40 H · 48.5

Earth colour glazed ceramic base.  
Natural finish teak table top.



SIDE TABLE

D · 40 H · 48.5

Iron colour glazed ceramic base.  
Natural finish teak table top.



SIDE TABLE

D · 40 H · 48.5

Sand colour glazed ceramic base.  
Natural finish teak table top.

# CRADLE LOUNGE

DESIGNER · HENRIK PEDERSEN · DENMARK



DAY BED

W · 260 D · 149 H · 186.5

Meteor colour powder coated aluminium frame with natural finish teak poles.  
Outdoor fabric seat & single back cushion included.  
Protective covers for seat & single back cushions included.

# DECK LOUNGE

DESIGNER · HENRIK PEDERSEN · DENMARK



223cm SEATING UNIT

W · 223 D · 125 H · 99

Natural finish teak frame.  
Fully upholstered, outdoor fabric seat cushion & 1x back cushion set included.  
Protective covers included.



261cm SEATING UNIT

W · 261 D · 125 H · 99

Natural finish teak frame.  
Fully upholstered, outdoor fabric seat cushion & 1x back cushion set included.  
Protective covers included.



ADDITIONAL BACK CUSHION

W · 110 D · 49 H · 60

Fully upholstered, outdoor fabric back cushion set.

# DECK DINING

DESIGNER · HENRIK PEDERSEN · DENMARK



OTTOMAN

W · 125 D · 110 H · 47

Natural finish teak frame.  
Fully upholstered, outdoor fabric seat cushion included.  
Protective covers included.



COFFEE TABLE

W · 95 L · 125 H · 27

Natural finish slatted teak frame and table top.  
Protective cover included.



289cm DINING TABLE

W · 109 L · 289 H · 74

Natural finish slatted teak frame and table top.  
Protective cover included.  
Seats 10.



365cm DINING TABLE

W · 111 L · 365 H · 74

Natural finish slatted teak frame and table top.  
Protective cover included.  
Seats 12.



3439cm DINING TABLE

W · 119.5 L · 439 H · 74

Natural finish slatted teak frame and table top.  
Protective cover included.  
Seats 14.



185cm SOFA TABLE

W · 52 L · 185 H · 42

Natural finish slatted teak frame and table top.  
Protective cover included.



223cm SOFA TABLE

W · 52 L · 223 H · 42

Natural finish slatted teak frame and table top.  
Protective cover included.

# FRESCO LOUNGE / DINING

DESIGNERS · MATTEO THUN & BENEDETTO FASCIANA · ITALY



LOUNGE CHAIR

W · 86 D · 76 H · 75

Powder coated aluminium frame.  
Wheat colour, woven all-weather wicker seat & back.  
Outdoor fabric seat cushion included.



2-SEATER SOFA

W · 153 D · 76.5 H · 76.5

Powder coated aluminium frame.  
Wheat colour, woven all-weather wicker seat & back.  
Outdoor fabric seat & back cushions included.



LOUNGER

W · 87 L · 208 H · 89.5

Powder coated aluminium frame.  
Wheat colour, woven all-weather wicker seat & back.  
5 reclining back positions.  
Outdoor fabric seat & back cushion included.



ROUND SIDE TABLE

D · 48 H · 44

Powder coated aluminium & Wheat colour, woven all-weather wicker frame.  
One piece, ceramic table top with powder-coated aluminium rim.



DINING CHAIR

W · 58 D · 69 H · 79

Powder coated aluminium frame.  
Wheat colour, woven all-weather wicker seat & back.  
Outdoor fabric seat cushion included.



90cm ROUND DINING TABLE

D · 90 H · 73

Powder coated aluminium & Wheat colour, woven all-weather wicker frame.  
One piece, ceramic table top with powder-coated aluminium rim.  
Seats 2.

# FERN LOUNGE & DINING

DESIGNER · SEBASTIAN HERKNER · GERMANY



HIGH BACK LOUNGE CHAIR

W · 86 D · 87 H · 115

Natural finish teak base frame.  
Powder coated aluminium back frame.  
Outdoor rope back panel.  
Outdoor fabric seat & back cushion included.  
Rope Colours : Dune / Raven



HIGH BACK 2-SEATER SOFA

W · 175 D · 92 H · 116

Natural finish teak base frame.  
Powder coated aluminium back frame.  
Outdoor rope back panel.  
Outdoor fabric seat & back cushions included.  
Rope Colours : Dune / Raven



HIGH BACK DAY BED

W · 175 D · 149 H · 116

Natural finish teak base frame.  
Powder coated aluminium back frame.  
Outdoor rope back panel.  
Outdoor fabric seat & back cushions included.  
Rope Colours : Dune / Raven



LOW BACK LOUNGE CHAIR

W · 80 D · 83 H · 77

Natural finish teak base frame.  
Powder coated aluminium back frame.  
Outdoor rope back panel.  
Outdoor fabric seat & back cushion included.  
Rope Colours : Dune / Raven



LOW BACK 2-SEATER SOFA

W · 170 D · 88 H · 79

Natural finish teak base frame.  
Powder coated aluminium back frame.  
Outdoor rope back panel.  
Outdoor fabric seat & back cushions included.  
Rope Colours : Dune / Raven



LOW BACK DAY BED

W · 170 D · 145 H · 79

Natural finish teak base frame.  
Powder coated aluminium back frame.  
Outdoor rope back panel.  
Outdoor fabric seat & back cushions included.  
Rope Colours : Dune / Raven



DINING CHAIR WITH ARMS

W · 63 D · 62 H · 88.5

Natural finish teak base frame.  
Powder coated aluminium back frame.  
Woven outdoor rope back panel.  
Outdoor fabric seat cushion included.  
Rope Colours : Dune / Raven

# GRID LOUNGE

DESIGNER · HENRIK PEDERSEN · DENMARK



LEFT / RIGHT END UNIT

W · 206 D · 103 H · 85

Powder coated aluminium frame.  
Upholstered outdoor fabric seat, back & arm cushions included.  
Frame Colours : Meteor / White / Java



LEFT / RIGHT CHAISE UNIT

W · 103 L · 206 H · 85

Powder coated aluminium frame.  
Natural finish teak platform.  
Upholstered outdoor fabric seat & back cushions included.  
Frame Colours : Meteor / White / Java



LEFT / RIGHT CHAISE UNIT

W · 103 L · 206 H · 85

Powder coated aluminium frame.  
Ceramic platform.  
Upholstered outdoor fabric seat & back cushions included.  
Frame Colours : Meteor / White / Java  
Ceramic Platforms : Nero / Bianco / Emperor



SMALL CORNER UNIT

W · 103 D · 103 H · 85

Powder coated aluminium frame.  
Upholstered outdoor fabric seat, back & arm cushions included.  
Frame Colours : Meteor / White / Java



SMALL CENTRE UNIT

W · 103 D · 103 H · 85

Powder coated aluminium frame.  
Upholstered outdoor fabric seat & back cushions included.  
Frame Colours : Meteor / White / Java



OTTOMAN

W · 103 D · 103 H · 40

Powder coated aluminium frame.  
Upholstered outdoor fabric seat cushions included.  
Frame Colours : Meteor / White / Java



CENTRE UNIT

W · 206 D · 103 H · 85

Powder coated aluminium frame.  
Upholstered outdoor fabric seat & back cushions included.  
Frame Colours : Meteor / White / Java



LEFT / RIGHT END TABLE UNIT

W · 206 D · 103 H · 85

Powder coated aluminium frame.  
Natural finish teak platform.  
Upholstered outdoor fabric seat & back cushions included.  
Frame Colours : Meteor / White / Java



LEFT / RIGHT END TABLE UNIT

W · 206 D · 103 H · 85

Powder coated aluminium frame.  
Ceramic platform.  
Upholstered outdoor fabric seat & back cushions included.  
Frame Colours : Meteor / White / Java  
Ceramic Platforms : Nero / Bianco / Emperor



CHILL UNIT

W · 180 D · 180 H · 85

Powder coated aluminium frame.  
Upholstered outdoor fabric seat, back & arm cushions included.  
Frame Colours : Meteor / White / Java



LEFT / RIGHT CHILL CHAISE UNIT

W · 180 D · 180 H · 85

Powder coated aluminium frame.  
Natural finish teak platform.  
Upholstered outdoor fabric seat & back cushions included.  
Frame Colours : Meteor / White / Java



LEFT / RIGHT CHILL CHAISE UNIT

W · 180 D · 180 H · 85

Powder coated aluminium frame.  
Ceramic platform.  
Upholstered outdoor fabric seat & back cushions included.  
Frame Colours : Meteor / White / Java  
Ceramic Platforms : Nero / Bianco / Emperor



SOFA

W · 206 D · 103 H · 85

Powder coated aluminium frame.  
Upholstered outdoor fabric seat, back & arm cushions included.  
Frame Colours : Meteor / White / Java



LOUNGER

W · 98 L · 208 H · 80.5

Powder coated aluminium frame.  
Natural finish teak platform.  
6 reclining back positions.  
Upholstered outdoor fabric seat & back cushion included.  
Frame Colours : Meteor / White / Java

# GRID LOUNGE

DESIGNER · HENRIK PEDERSEN · DENMARK

# GRID LOUNGE

DESIGNER · HENRIK PEDERSEN · DENMARK



LARGE COFFEE TABLE

W · 103 L · 103 H · 30

Powder coated aluminium frame.  
Natural finish slatted teak table top.  
Frame Colours : Meteor / White / Java



LARGE COFFEE TABLE

W · 103 L · 103 H · 30

Powder coated aluminium frame.  
Frame Colours : Meteor / White / Java  
Ceramic Tops : Nero / Bianco / Emperor



SMALL COFFEE TABLE

W · 50 L · 103 H · 30

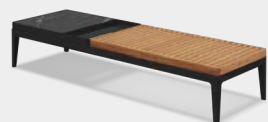
Powder coated aluminium frame.  
Natural finish slatted teak table top.  
Frame Colours : Meteor / White / Java



SMALL COFFEE TABLE

W · 50 L · 103 H · 30

Powder coated aluminium frame.  
Frame Colours : Meteor / White / Java  
Ceramic Tops : Nero / Bianco / Emperor



COFFEE TABLE

W · 50 L · 151 H · 30

Meteor colour powder coated aluminium frame.  
Natural finish slatted teak & ceramic table top.  
Frame Colours : Meteor / White / Java  
Ceramic Tops : Nero / Bianco / Emperor

# GRID LOUNGE

DESIGNER · HENRIK PEDERSEN · DENMARK



SMALL CONSOLE TABLE

W · 40 L · 103 H · 63

Powder coated aluminium frame.  
Natural finish slatted teak table top.  
Frame Colours : Meteor / White / Java



SMALL CONSOLE TABLE

W · 40 L · 103 H · 63

Powder coated aluminium frame.  
Frame Colours : Meteor / White / Java  
Ceramic Tops : Nero / Bianco / Emperor



LARGE CONSOLE TABLE

W · 40 L · 206 H · 63

Powder coated aluminium frame.  
Natural finish slatted teak table top.  
Frame Colours : Meteor / White / Java



LARGE CONSOLE TABLE

W · 40 L · 206 H · 63

Powder coated aluminium frame.  
Frame Colours : Meteor / White / Java  
Ceramic Tops : Nero / Bianco / Emperor

# GRID CABANA LOUNGE

DESIGNER · HENRIK PEDERSEN · DENMARK



CABANA

W · 212 D · 212 H · 234

Powder coated aluminium frame.  
Natural finish, slatted teak back panel.  
2x Nimbus colour, reciprocating sling fabric screens included. Protective covers & outdoor fabric seat cushions included.  
Back cushions available as optional accessory.  
Frame Colours : Meteor / Java

CABANA

W · 212 D · 212 H · 234

Powder coated aluminium frame.  
Natural finish, slatted teak back & roof panel.  
Protective covers & outdoor fabric seat cushions included.  
Back cushions available as optional accessory.  
Frame Colours : Meteor / Java



CABANA

W · 212 D · 212 H · 234

Powder coated aluminium frame.  
Powder coated aluminium back panel.  
2x Nimbus colour, reciprocating sling fabric screens included. Protective covers & outdoor fabric seat cushions included.  
Back cushions available as optional accessory.  
Frame Colours : Meteor / Java

CABANA

W · 212 D · 212 H · 234

Powder coated aluminium frame.  
Powder coated aluminium slatted back & roof panel.  
Protective covers & outdoor fabric seat cushions included.  
Back cushions available as optional accessory.  
Frame Colours : Meteor / Java



CABANA COFFEE TABLE

W · 50 L · 103 H · 30

Powder coated aluminium frame.  
Natural finish, slatted teak table top.  
Frame Colours : Meteor / Java

CABANA COFFEE TABLE

W · 50 L · 103 H · 30

Powder coated aluminium frame.  
Frame Colours : Meteor / White / Java  
Ceramic Tops : Nero / Emperor

# HALO PARASOLS

DESIGNER · HENRIK PEDERSEN · DENMARK



SQUARE PUSH-UP PARASOL

W · 260 D · 260 H · 253

Meteor colour, powder coated aluminium frame.  
Grey colour, marine grade Sunbrella fabric canopy.  
Protective cover included.



SQUARE CANTILEVER PARASOL

W · 300 D · 300 H · 259

Meteor colour, powder coated aluminium frame.  
Grey colour, marine grade Sunbrella fabric canopy.  
Protective cover included.

# PRODUCT CARE & MAINTENANCE



TEAK SEALER

VOLUME · 1,000ml

Helps to retain the natural, brown colour of teak.



TEAK & UPHOLSTERY CLEANER

VOLUME · 1,000ml

Thoroughly cleans & brightens teak or upholstery fabrics in one step. Also use to restore & revive weathered teak.



TEAK & UPHOLSTERY PROTECTOR

VOLUME · 1,000ml

Repels water & moisture and helps to prevent stains from food and drinks on teak or upholstery fabrics. Also for use on weathered teak to help retain the silver grey patina.

# HAVEN LOUNGE

DESIGNER · SEBASTIAN HERKNER · GERMANY



LOUNGE CHAIR

W · 94 D · 91 H · 60

Natural finish teak frame.  
Outdoor fabric seat & back cushion included.



OTTOMAN

W · 81 D · 56 H · 42.5

Natural finish teak frame.  
Outdoor fabric seat cushion included.



LOW COFFEE TABLE TEAK

W · 120 L · 120 H · 28

Natural finish teak frame & slatted table top.



2-SEATER SOFA

W · 192 D · 94 H · 60

Natural finish teak frame.  
Outdoor fabric seat & back cushions included.



3-SEATER SOFA

W · 276.5 D · 94 H · 60

Natural finish teak frame.  
Outdoor fabric seat & back cushions included.



LOW COFFEE TABLE CERAMIC

W · 120 L · 120 H · 28

Natural finish teak frame.  
One piece ceramic table top.  
Ceramic Tops : Nero / Bianco / Emperor



HIGH COFFEE TABLE TEAK

W · 42 L · 159 H · 38.5

Natural finish teak frame & slatted table top.



HIGH COFFEE TABLE CERAMIC

W · 42 L · 159 H · 38.5

Natural finish teak frame.  
One piece ceramic table top.  
Ceramic Tops : Nero / Bianco / Emperor

# KASHA DINING

DESIGNER · HENRIK PEDERSEN · DENMARK



90cm ROUND DINING TABLE

D · 90 H · 74.5

Earth colour glazed ceramic base.  
Natural finish teak table top.  
Seats 4.



120cm ROUND DINING TABLE

D · 120 H · 74.5

Earth colour glazed ceramic base.  
Natural finish teak table top.  
Seats 5.



90cm ROUND DINING TABLE

D · 90 H · 74.5

Iron colour glazed ceramic base.  
Natural finish teak table top.  
Seats 4.



120cm ROUND DINING TABLE

D · 120 H · 74.5

Iron colour glazed ceramic base.  
Natural finish teak table top.  
Seats 5.



90cm ROUND DINING TABLE

D · 90 H · 74.5

Sand colour glazed ceramic base.  
Natural finish teak table top.  
Seats 4.



120cm ROUND DINING TABLE

D · 120 H · 74.5

Sand colour glazed ceramic base.  
Natural finish teak table top.  
Seats 5.

# KAY LOUNGE & DINING

DESIGNER · HENRIK PEDERSEN · DENMARK



LOW BACK LOUNGE CHAIR

W · 85.5 D · 84.5 H · 83.5

Natural finish teak frame.  
Woven all-weather wicker back panel.  
Outdoor fabric seat cushion included.  
Wicker Colours : Brindle / Copper / Harvest



LOW BACK ROCKING CHAIR

W · 85.5 D · 84.5 H · 83.5

Natural finish teak frame.  
Woven all-weather wicker back panel.  
Outdoor fabric seat cushion included.  
Wicker Colours : Brindle / Copper / Harvest



LOW BACK SOFA

W · 156.5 D · 84.5 H · 83.5

Natural finish teak frame.  
Woven all-weather wicker back panel.  
Outdoor fabric seat cushion included.  
Wicker Colours : Brindle / Copper / Harvest



BAR CHAIR

W · 54 D · 55 H · 102

Natural finish teak frame.  
Wheat colour, woven all-weather wicker seat.



DINING CHAIR WITH ARMS

W · 59 D · 60 H · 80

Natural finish teak frame.  
Wheat colour, woven all-weather wicker seat.



DINING CHAIR

W · 53 D · 59 H · 80

Natural finish teak frame.  
Wheat colour, woven all-weather wicker seat.



HIGH BACK LOUNGE CHAIR

W · 85.5 D · 84.5 H · 95.5

Natural finish teak frame.  
Woven all-weather wicker back panel.  
Outdoor fabric seat cushion included.  
Wicker Colours : Brindle / Copper / Harvest



HIGH BACK ROCKING CHAIR

W · 85.5 D · 84.5 H · 95.5

Natural finish teak frame.  
Woven all-weather wicker back panel.  
Outdoor fabric seat cushion included.  
Wicker Colours : Brindle / Copper / Harvest



OTTOMAN

W · 67.5 D · 57 SH · 39.5

Natural finish teak frame.  
Woven all-weather wicker seat panel.  
Outdoor fabric seat cushion included.  
Wicker Colours : Brindle / Copper / Harvest



SQUARE DINING TABLE

W · 87 L · 87 H · 74.5

Natural finish teak frame with slatted table top.  
Without parasol hole.  
Seats 4.



179cm DINING TABLE TEAK

W · 100 L · 179 H · 74.5

Natural finish teak frame with slatted table top.  
Without parasol hole.  
Seats 6.



244cm DINING TABLE TEAK

W · 100 L · 244 H · 74.5

Natural finish teak frame with slatted table top.  
Without parasol hole.  
Seats 8.



DINING CHAIR WITH ARMS

W · 63.5 D · 62.5 H · 85.5

Natural finish teak frame.  
Woven all-weather wicker back panel.  
Outdoor fabric seat cushion included.  
Wicker Colours : Brindle / Copper / Harvest



LOUNGER

W · 88 L · 205 H · 97

Natural finish teak frame.  
Woven all-weather wicker back panel.  
5 reclining back positions.  
Outdoor fabric seat & back cushion included.  
Wicker Colours : Brindle / Copper / Harvest



SQUARE DINING TABLE CERAMIC

W · 87 L · 87 H · 74.5

Natural finish teak frame.  
One piece ceramic table top.  
Without parasol hole.  
Seats 4.  
Ceramic Tops : Nero / Emperor



179cm DINING TABLE CERAMIC

W · 100 L · 179 H · 74.5

Natural finish teak frame.  
One piece ceramic table top.  
Without parasol hole.  
Seats 6.  
Ceramic Tops : Nero / Emperor



244cm DINING TABLE CERAMIC

W · 100 L · 244 H · 74.5

Natural finish teak frame.  
One piece ceramic table top.  
Without parasol hole.  
Seats 8.  
Ceramic Tops : Nero / Emperor

# KAY LOUNGE & DINING

DESIGNER · HENRIK PEDERSEN · DENMARK

# LIMA LOUNGE

DESIGNER · HENRIK PEDERSEN · DENMARK



LEFT HIGH BACK CORNER UNIT

RIGHT HIGH BACK CORNER UNIT

TOP VIEW

W · 88 D · 88 H · 108

W · 88 D · 88 H · 108

Natural finish teak frame.  
Wheat colour, woven all-weather wicker back panels.  
Outdoor fabric seat & back cushions included.  
Headrest cushion available as optional accessory.

Natural finish teak frame.  
Wheat colour, woven all-weather wicker back panels.  
Outdoor fabric seat & back cushions included.  
Headrest cushion available as optional accessory.



OTTOMAN

COFFEE TABLE

W · 81 D · 81 H · 38

W · 81 L · 81 H · 31

Natural finish teak frame.  
Outdoor fabric seat cushion included.

Natural finish teak frame.  
Wheat colour, woven all-weather wicker panel.  
Optional, Grey colour, tempered glass table top.



LEFT LOW BACK CORNER UNIT

RIGHT LOW BACK CORNER UNIT

TOP VIEW

W · 83 D · 83 H · 86

W · 83 D · 83 H · 86

Natural finish teak frame.  
Wheat colour, woven all-weather wicker back panels.  
Outdoor fabric seat & back cushions included.

Natural finish teak frame.  
Wheat colour, woven all-weather wicker back panels.  
Outdoor fabric seat & back cushions included.



LOUNGER

STORAGE CHEST

SERVING TABLE

W · 80 L · 200 H · 86

W · 165 D · 65 SH · 93.5

W · 65 L · 165 SH · 93.5

Natural finish teak frame.  
Wheat colour, woven all-weather wicker seat & back panels. 5 reclining back positions.  
Outdoor fabric seat & back cushion included.

Natural finish teak base frame.  
Wheat colour, woven all-weather wicker sides.  
Meteor colour inner liner.  
Gas strut assisted, natural finish slatted teak lid.  
Removable sling base shelf.  
Natural colour leather pull handle.

Natural finish teak frame with slatted table top.  
Wheat colour, woven all-weather wicker lower shelf panel.



HIGH BACK CENTRE UNIT

LOW BACK CENTRE UNIT

HEADREST CUSHION

W · 81 D · 88 H · 108

W · 81 D · 83 H · 86

W · 75 D · 13 H · 21

Natural finish teak frame.  
Wheat colour, woven all-weather wicker back panels.  
Outdoor fabric seat & back cushions included.  
Headrest cushion available as optional accessory.

Natural finish teak frame.  
Wheat colour, woven all-weather wicker back panels.  
Outdoor fabric seat & back cushions included.

Headrest cushion with natural finish teak counter-weight. Natural colour leather straps.  
Removable outdoor fabric cover with zipper.  
Polypropylene fabric interliner with polyester fibre fill.



159cm DINING BENCH

224cm DINING BENCH

W · 159 D · 48 H · 44

W · 224 D · 48 H · 44

Natural finish teak frame.  
Wheat colour, woven all-weather wicker seat.

Natural finish teak frame.  
Wheat colour, woven all-weather wicker seat.

# MAYA LOUNGE

DESIGNER · MARK GABBERTAS · UK



LOUNGE CHAIR

W · 97 D · 86 H · 73

Meteor colour powder coated aluminium frame. Upholstered outdoor fabric seat, back & arm cushions included.



SOFA

W · 172 D · 86 H · 73

Meteor colour powder coated aluminium frame. Upholstered outdoor fabric seat, back & arm cushions included.



LEFT / RIGHT END UNIT

W · 161 D · 86 H · 73

Meteor colour powder coated aluminium frame. Upholstered outdoor fabric seat, back & arm cushions included.



CENTRE UNIT

W · 150 D · 86 H · 73

Meteor colour powder coated aluminium frame. Upholstered outdoor fabric seat & back cushions included.



OTTOMAN

W · 150 D · 75 H · 44.5

Meteor colour powder coated aluminium frame. Upholstered outdoor fabric seat cushion included.



CORNER UNIT

W · 86 D · 86 H · 73

Meteor colour powder coated aluminium frame. Upholstered outdoor fabric seat, back & arm cushions included.



CENTRE UNIT

W · 75 D · 86 H · 73

Meteor colour powder coated aluminium frame. Upholstered outdoor fabric seat & back cushions included.



OTTOMAN

W · 75 D · 75 H · 44.5

Meteor colour powder coated aluminium frame. Upholstered outdoor fabric seat cushion included.



LEFT / RIGHT CHAISE UNIT

W · 150 D · 86 H · 73

Meteor colour powder coated aluminium frame. Upholstered outdoor fabric seat, back & arm cushions included.



LEFT / RIGHT END UNIT

W · 111 D · 86 H · 73

Meteor colour powder coated aluminium frame. Upholstered outdoor fabric seat, back & arm cushions included.



CENTRE UNIT

W · 100 D · 86 H · 73

Meteor colour powder coated aluminium frame. Upholstered outdoor fabric seat & back cushions included.



OTTOMAN

W · 100 D · 75 H · 44.5

Meteor colour powder coated aluminium frame. Upholstered outdoor fabric seat cushion included.



COFFEE TABLE 75 x 50

W · 50 D · 75 H · 28

Meteor colour powder coated aluminium frame. Natural finish teak slatted table top.



COFFEE TABLE 75 x 75

W · 75 D · 75 H · 28

Meteor colour powder coated aluminium frame. Natural finish teak slatted table top.



COFFEE TABLE 75 x 100

W · 75 D · 100 H · 28

Meteor colour powder coated aluminium frame. Natural finish teak slatted table top.

# MISTRAL HIGH BACK LOUNGE

DESIGNER · HENRIK PEDERSEN · DENMARK



HIGH BACK SOFA

W · 208 D · 94 H · 102

Meteor colour powder coated aluminium & natural finish teak frame.  
Koala colour, woven all-weather wicker back panels.  
Outdoor fabric seat, back & scatter cushions included.



HIGH BACK LOUNGE CHAIR

W · 98 D · 94 H · 102

Meteor colour powder coated aluminium & natural finish teak frame.  
Koala colour, woven all-weather wicker back panels.  
Outdoor fabric seat, back & scatter cushions included.



OTTOMAN

W · 90 D · 90 H · 44

Meteor colour powder coated aluminium & natural finish teak frame.  
Outdoor fabric seat cushion included.



LOW BACK SOFA

W · 208 D · 94 H · 80

Meteor colour powder coated aluminium & natural finish teak frame.  
Koala colour, woven all-weather wicker back panels.  
Outdoor fabric seat, back & scatter cushions included.



LOW BACK LOUNGE CHAIR

W · 98 D · 94 H · 80

Meteor colour powder coated aluminium & natural finish teak frame.  
Koala colour, woven all-weather wicker back panels.  
Outdoor fabric seat, back & scatter cushions included.



OTTOMAN

W · 90 D · 90 H · 44

Meteor colour powder coated aluminium & natural finish teak frame.  
Outdoor fabric seat cushion included.



HIGH BACK LEFT CHAISE

W · 204 D · 94 H · 102

Meteor colour powder coated aluminium & natural finish teak frame.  
Koala colour, woven all-weather wicker back panels.  
Outdoor fabric seat, back & scatter cushions included.



HIGH BACK RIGHT CHAISE

W · 204 D · 94 H · 102

Meteor colour powder coated aluminium & natural finish teak frame.  
Koala colour, woven all-weather wicker back panels.  
Outdoor fabric seat, back & scatter cushions included.



HIGH BACK DAY BED

W · 204 D · 98 H · 102

Meteor colour powder coated aluminium & natural finish teak frame.  
Koala colour, woven all-weather wicker back panels.  
Outdoor fabric seat, back & scatter cushions included.



LOW BACK LEFT CHAISE

W · 204 D · 94 H · 80

Meteor colour powder coated aluminium & natural finish teak frame.  
Koala colour, woven all-weather wicker back panels.  
Outdoor fabric seat, back & scatter cushions included.



LOW BACK RIGHT CHAISE

W · 204 D · 94 H · 80

Meteor colour powder coated aluminium & natural finish teak frame.  
Koala colour, woven all-weather wicker back panels.  
Outdoor fabric seat, back & scatter cushions included.



LOW BACK DAY BED

W · 204 D · 98 H · 80

Meteor colour powder coated aluminium & natural finish teak frame.  
Koala colour, woven all-weather wicker back panels.  
Outdoor fabric seat, back & scatter cushions included.



COFFEE TABLE

W · 60.5 L · 120 H · 33

Meteor colour powder coated aluminium frame.  
Natural finish, slatted teak table top.



COFFEE TABLE

W · 60.5 L · 120 H · 33

Meteor colour powder coated aluminium frame.  
Natural finish, slatted teak table top.

# MISTRAL LOW BACK LOUNGE

DESIGNER · HENRIK PEDERSEN · DENMARK

# NAVIGATOR DINING

DESIGNER · GLYN PETER MACHIN · UK



FOLDING CHAIR WITH ARMS

W · 55    H · 49    H · 86

Natural finish teak & brushed stainless steel frame. Outdoor fabric seat & back cushion. Folds flat.



FOLDING CHAIR

W · 53    H · 52    H · 82

Natural finish teak, brushed stainless steel & Wheat colour, all weather wicker frame. Outdoor fabric seat & back cushion. Folds flat.



100cm FOLDING DINING TABLE

W · 100    L · 100    H · 75

Natural finish teak & brushed stainless steel frame & table top. Without parasol hole. Folds flat. Seats 4.

# OUTDOOR RUGS

DESIGNER · HENRIK PEDERSEN · DENMARK



140cm ROUND RUG

D · 140

Braided Sunbrella acrylic / polypropylene outdoor rope. Ombre Construction Rope Colours : Graphite / Hazel / Pewter / Wren



220cm ROUND RUG

D · 140

Braided Sunbrella acrylic / polypropylene outdoor rope. Ombre Construction Rope Colours : Graphite / Hazel / Pewter / Wren

# RAW DINING

DESIGNER · HENRIK PEDERSEN · DENMARK



280cm DINING TABLE

W · 94 - 104    L · 280    H · 74

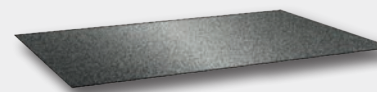
Meteor colour, powder coated aluminium frame. 50mm thick raw teak table top. Natural or buffed teak finish. Sap wood or contour cut edge profile. Without parasol hole. Seats 10. Protective cover included.



350cm DINING TABLE

W · 94 - 104    L · 350    H · 74

Meteor colour, powder coated aluminium frame. 50mm thick raw teak table top. Natural or buffed teak finish. Sap wood or contour cut edge profile. Without parasol hole. Seats 12. Protective cover included.



2m x 3m RECTANGULAR RUG

W · 300    D · 200

Braided Sunbrella acrylic / polypropylene outdoor rope. Ombre Construction Rope Colours : Graphite / Hazel / Pewter / Wren



3m x 4m RECTANGULAR RUG

W · 400    D · 300

Braided Sunbrella acrylic / polypropylene outdoor rope. Ombre Construction Rope Colours : Graphite / Hazel / Pewter / Wren

# SALINA LOUNGE

DESIGNERS · MATTEO THUN & BENEDETTO FASCIANA · ITALY



LOUNGE CHAIR

W · 100 D · 100 H · 75

Natural finish teak & brushed stainless steel frame. Wheat colour, woven all-weather wicker back & arm panels. Outdoor fabric, seat & back cushions included.



SQUARE CORNER UNIT

W · 100 D · 100 H · 75

Natural finish teak & brushed stainless steel frame. Wheat colour, woven all-weather wicker back & arm panels. Outdoor fabric, seat & back cushions included.



OTTOMAN

W · 100 D · 100 H · 38

Natural finish teak & brushed stainless steel frame. Outdoor fabric, seat cushion included.



RIGHT CHAISE UNIT

W · 100 L · 180 H · 75

Natural finish teak & brushed stainless steel frame. Wheat colour, woven all-weather wicker back & arm panels. Outdoor fabric, seat & back cushions included.



LEFT CHAISE UNIT

W · 100 L · 180 H · 75

Natural finish teak & brushed stainless steel frame. Wheat colour, woven all-weather wicker back & arm panels. Outdoor fabric, seat & back cushions included.



2-SEATER SOFA

W · 200 D · 100 H · 75

Natural finish teak & brushed stainless steel frame. Wheat colour, woven all-weather wicker back & arm panels. Outdoor fabric, seat & back cushions included.



LARGE OTTOMAN

W · 160 D · 100 H · 38

Natural finish teak & brushed stainless steel frame. Outdoor fabric, seat cushion included.



SQUARE COFFEE TABLE

W · 100.5 L · 100.5 H · 35

Natural finish teak & brushed stainless steel frame. Natural finish slatted teak table top.



ROUND COFFEE TABLE

D · 83.5 H · 35

Natural finish teak & brushed stainless steel frame. Natural finish slatted teak table top.



ROUND SIDE TABLE

D · 41 H · 45

Natural finish teak & brushed stainless steel frame. Natural finish slatted teak table top.



RIGHT END UNIT

W · 200 D · 100 H · 75

Natural finish teak & brushed stainless steel frame. Wheat colour, woven all-weather wicker back & arm panels. Outdoor fabric, seat & back cushions included.



LEFT END UNIT

W · 200 D · 100 H · 75

Natural finish teak & brushed stainless steel frame. Wheat colour, woven all-weather wicker back & arm panels. Outdoor fabric, seat & back cushions included.

# SALINA LOUNGE

DESIGNERS · MATTEO THUN & BENEDETTO FASCIANA · ITALY

# SARANAC LOUNGE / DINING

DESIGNER · MARK GABBERTAS · UK



LOUNGE CHAIR

W · 74    D · 80    H · 69

Natural finish teak frame.  
Raven colour, woven outdoor rope back panel.  
Outdoor fabric seat & back cushions included.



OTTOMAN

W · 74    D · 59    H · 50

Natural finish teak frame.  
Outdoor fabric seat cushion included.



2-SEATER SOFA

W · 160    D · 81    H · 69

Natural finish teak frame.  
Raven colour, woven outdoor rope back panel.  
Outdoor fabric seat & back cushions included.



3-SEATER SOFA

W · 234    D · 81    H · 69

Natural finish teak frame.  
Raven colour, woven outdoor rope back panel.  
Outdoor fabric seat & back cushions included.



LOUNGER

W · 79    L · 202    H · 81

Natural finish teak frame.  
Gas strut reclining mechanism.  
Outdoor fabric seat & back cushion included.



DINING CHAIR WITH ARMS

W · 59    D · 62    H · 81

Natural finish teak frame.  
Raven colour, woven outdoor rope back panel.  
Outdoor fabric seat & back cushions included.

# SEPAL COFFEE & SIDE TABLES

DESIGNER · MARK GABBERTAS · UK



COFFEE TABLE

W · 87    D · 83    H · 31

Natural finish teak frame.  
Nero colour ceramic table top with Meteor colour,  
powder coated aluminium rim.



COFFEE TABLE

W · 87    D · 83    H · 31

Natural finish teak frame.  
Bianco colour ceramic table top with White colour,  
powder coated aluminium rim.



COFFEE TABLE

W · 87    D · 83    H · 31

Natural finish teak frame.  
Emperor colour ceramic table top with Java colour,  
powder coated aluminium rim.



SIDE TABLE

W · 64    D · 60    H · 41

Natural finish teak frame.  
Nero colour ceramic table top with Meteor colour,  
powder coated aluminium rim.



SIDE TABLE

W · 64    D · 60    H · 41

Natural finish teak frame.  
Bianco colour ceramic table top with White colour,  
powder coated aluminium rim.



SIDE TABLE

W · 64    D · 60    H · 41

Natural finish teak frame.  
Emperor colour ceramic table top with Java colour,  
powder coated aluminium rim.

# SCATTER CUSHIONS

# SWAY DINING / LOUNGE

DESIGNER · HENRIK PEDERSEN · DENMARK



RECTANGULAR SCATTER CUSHION

W · 80 H · 65 D · 10

Removable outdoor fabric cover with zipper.  
Polypropylene fabric interliner with polyester fibre fill.



STACKING CHAIR WITH ARMS

W · 58.5 D · 55 H · 85

Powder coated stainless steel frame.  
Natural finish teak arms.  
Ferrari sling seat & back.  
Frame / Sling Colours : Meteor / Anthracite,  
Meteor / Granite, White / Seagull



RECTANGULAR SCATTER CUSHION

W · 45 H · 37 D · 10

Removable outdoor fabric cover with zipper.  
Polypropylene fabric interliner with polyester fibre fill.



RECTANGULAR SCATTER CUSHION

W · 55 H · 32 D · 10

Removable outdoor fabric cover with zipper.  
Polypropylene fabric interliner with polyester fibre fill.



RECTANGULAR SCATTER CUSHION

W · 68 H · 42 D · 18

Removable outdoor fabric cover with zipper.  
Polypropylene fabric interliner with polyester fibre fill.



STACKING CHAIR WITH ARMS

W · 65 D · 61 H · 82

Natural finish teak & powder coated aluminium & stainless steel frame. Ferrari sling seat & back.  
Frame / Sling Colours : Meteor / Anthracite,  
Meteor / Granite, White / Seagull, Java / Sepia



STACKING SIDE CHAIR

W · 55 D · 61 H · 82

Natural finish teak & powder coated aluminium & stainless steel frame. Ferrari sling seat & back.  
Frame / Sling Colours : Meteor / Anthracite,  
Meteor / Granite, White / Seagull, Java / Sepia



SQUARE SCATTER CUSHION

W · 50 H · 50 D · 10

Removable outdoor fabric cover with zipper.  
Polypropylene fabric interliner with polyester fibre fill.



SQUARE SCATTER CUSHION

W · 58 H · 58 D · 12

Removable outdoor fabric cover with zipper.  
Polypropylene fabric interliner with polyester fibre fill.



LOUNGER

W · 68 L · 204 H · 90

Natural finish teak & powder coated aluminium & stainless steel frame. Ferrari sling seat & back.  
5 reclining back positions.  
Frame / Sling Colours : Meteor / Anthracite,  
Meteor / Granite, White / Seagull, Java / Sepia

## SPLIT DINING

DESIGNER · HENRIK PEDERSEN · DENMARK



28=20cm DINING TABLE

W · 92    L · 220    H · 73

Powder coated aluminium frame.  
Natural finish slatted teak table top.  
Without parasol hole.  
Seats 8.



280cm DINING TABLE

W · 92    L · 280    H · 73

Powder coated aluminium frame.  
Natural finish slatted teak table top.  
Without parasol hole.  
Seats 10.

## WHIRL DINING

DESIGNER · HENRIK PEDERSEN · DENMARK



150cm ROUND DINING TABLE

D · 150    H · 73.5

Natural finish teak frame with slatted table top.  
Without parasol hole.  
Seats 6.

## ZENITH LOUNGE

DESIGNER · HENRIK PEDERSEN · DENMARK



LOUNGE CHAIR WITH ARMS

W · 93    D · 93    H · 83

Powder coated aluminium frame.  
Natural finish teak arms.  
Wheat colour, woven all-weather wicker seat & back panels. Outdoor fabric seat & back cushion included.  
Frame Colours : Meteor / White



LOUNGE CHAIR

W · 84.5    D · 93    H · 83

Powder coated aluminium frame.  
Wheat colour, woven all-weather wicker seat & back panels. Outdoor fabric seat & back cushion included.  
Frame Colours : Meteor / White



LOUNGER

W · 89.5    L · 157    H · 85

Powder coated aluminium frame.  
Wheat colour, woven all-weather wicker seat & back panels. Outdoor fabric seat & back cushion included.  
Frame Colours : Meteor / White



OTTOMAN

W · 75    D · 64    H · 42

Powder coated aluminium frame.  
Wheat colour, woven all-weather wicker seat panel. Outdoor fabric seat cushion included.  
Frame Colours : Meteor / White



2-SEATER SOFA

W · 170    D · 88    H · 83

Powder coated aluminium frame.  
Natural finish teak arms.  
Wheat colour, woven all-weather wicker seat & back panels. Outdoor fabric seat & back cushion included.  
Frame Colours : Meteor / White



## FABRICS

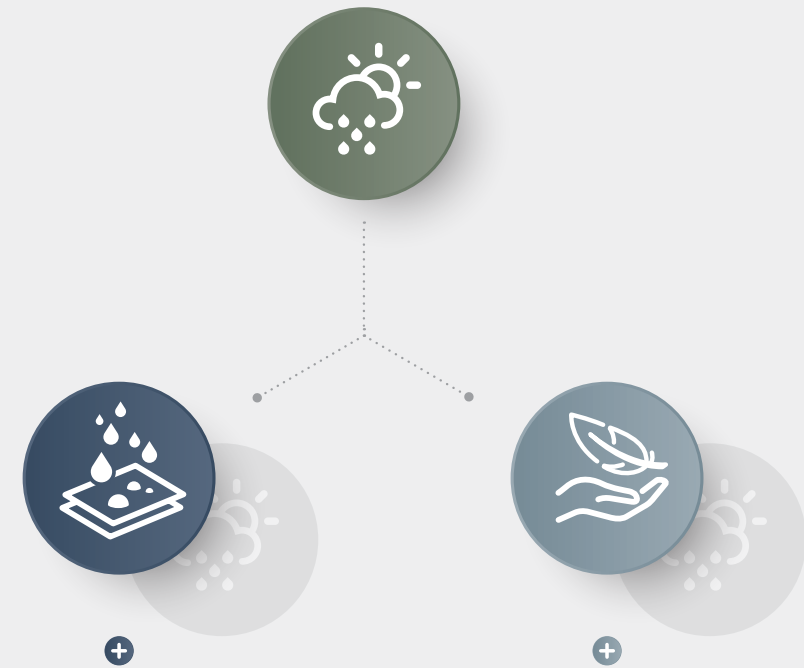
No matter which type of fabric you choose for your cushions, Gloster only use the best outdoor fabrics that are manufactured using 100% solution dyed acrylic yarns for maximum resistance to the fading and degrading effects of sunlight. All fabrics are finished with a water-repellent

coating on the surface to reduce water absorbency. If the fabric does become wet from prolonged exposure, they will come to no harm, and the fabrics will dry out naturally. Gloster cushions are offered with fabrics that fall into three distinct groups:

## OUTDOOR PERFORMANCE

Offered in a wide selection of stylish and sophisticated fabrics with a soft hand, our Outdoor Performance cushions use the softest, most luxurious fillings that give

the feel of the most comfortable indoor furniture. A highly water-resistant barrier beneath the outer fabric cover protects the fillings, keeping drying times to a minimum.



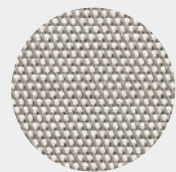
### MAXIMUM WATER RESISTANCE

For maximum water resistance, a selection of Sunbrella® Rain cover fabrics features a water-resistant coating that is applied to the back face, helping prevent water travelling beyond the surface of the fabric. Although not offering quite the same soft hand as our other fabrics, these water-resistant fabrics are very practical and quick drying. The fillings inside the cushion are engineered using open cell materials to allow for maximum air circulation, helping to speed up the drying process even further.

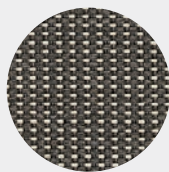
### MAXIMUM SOFT TOUCH

Combining with all the benefits present in Outdoor Performance cushions, Gloster offer this range of exclusive, knitted outdoor fabrics, the first to be produced using 100% solution dyed acrylic yarns. These knitted fabrics offer the ultimate in terms of softness, giving a sumptuous cosy feel, while the inherent stretch allows for the perfect fit to even the most demanding of cushion shapes. The Wave fabrics feature a unique, 3D knitted structure giving levels of texture and softness unparalleled in outdoor fabrics.

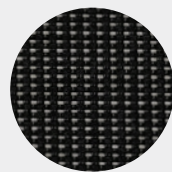
GRADE B  
WATER RESISTANT FABRICS



SAILING SEAGULL



CAMERON GRANITE



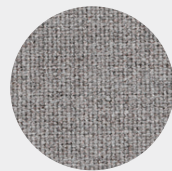
CAMERON ANTHRACITE



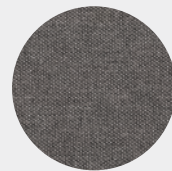
BLEND SAND



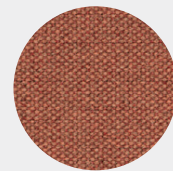
BLEND LINEN



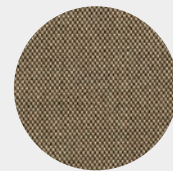
BLEND FOG



BLEND COAL



BLEND CLAY



BLEND LATTE



WILLA PEAT



WILLA CHINCHILLA



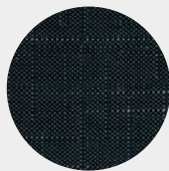
WILLA SILT



WILLA PARCHMENT



WILLA SNOW



WILLA DENIM



WILLA SKY

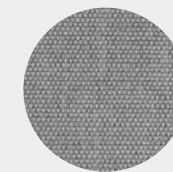


WILLA SAGE

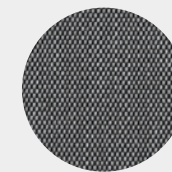
GRADE C  
WATER RESISTANT FABRICS



CASTILLO DOVE



CASTILLO SMOKE

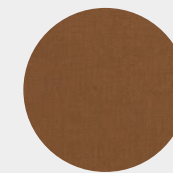


CASTILLO SHADOW

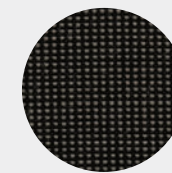
GRADE B  
OUTDOOR PERFORMANCE FABRICS



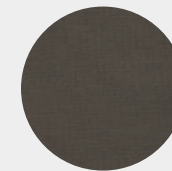
FIFE OLIVE



FIFE SALMON



FIFE GRANITE



FIFE PLATINUM



FIFE NICKEL



FIFE RAINY GREY



FIFE CANVAS GREY



FIFE VESTERHAV SAND



FIFE BONE

GRADE B  
OUTDOOR PERFORMANCE FABRICS



HERITAGE ASHE



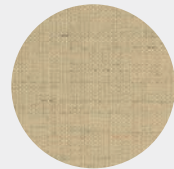
HERITAGE SABLE



GROUND BEACH



GROUND CHARCOAL

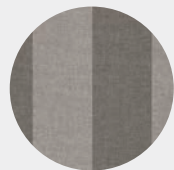


GROUND SAND

GRADE B  
OUTDOOR PERFORMANCE FABRICS



POOLSIDE COAL



POOLSIDE SMOKE



POOLSIDE LINEN

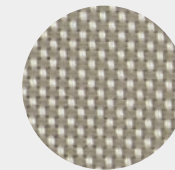


PINSTRIPED COAL

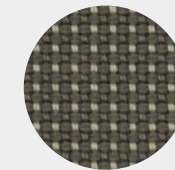


PINSTRIPED FOG

GRADE C  
OUTDOOR PERFORMANCE FABRICS



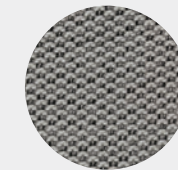
ROBBEN GREY



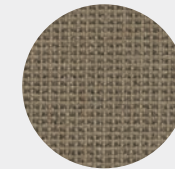
ROBBEN CHARCOAL



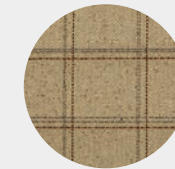
LOPI MARBLE



LOPI CHARCOAL



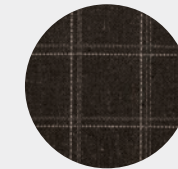
LOOM 3 CASTLEROCK



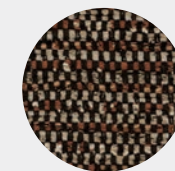
HUNT DUNE



HUNT GREYSTONE



HUNT RAVEN



ZENITH EARTHEN



ZENITH PEBBLE



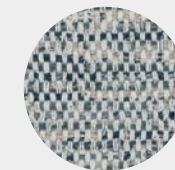
ZENITH WREN



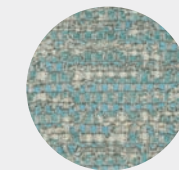
ZENITH DUNE



ZENITH SNOW



ZENITH DENIM

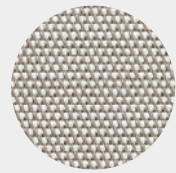


ZENITH SKY

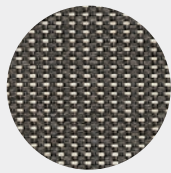


ZENITH STEM

GRADE C  
UKFR (FIRE RESISTANT) FABRICS



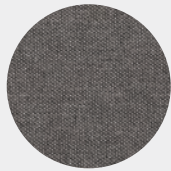
SAILING SEAGULL



CAMERON GRANITE



BLEND LINEN



BLEND COAL



BLEND LATTE



FIFE GRANITE



FIFE NICKEL



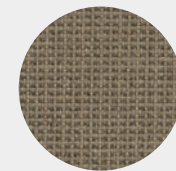
FIFE RAINY GREY



FIFE CANVAS GREY



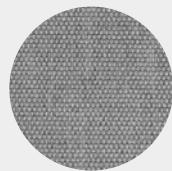
FIFE VESTERHAV SAND



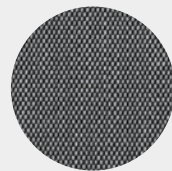
LOOM 3 CASTLEROCK



CASTILLO DOVE



CASTILLO SMOKE

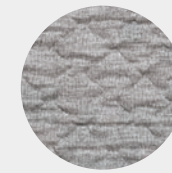


CASTILLO SHADOW

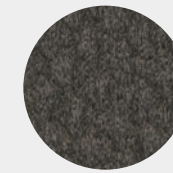
GRADE D  
SOFT TOUCH FABRICS



WAVE BUFF



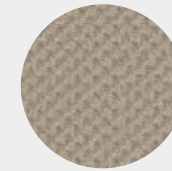
WAVE GRAVEL



WAVE QUARRY



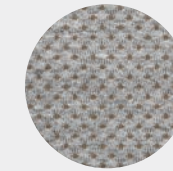
WAVE RUSSET



DOT OYSTER



DOT NIMBUS



DOT PUTTY



TUCK TRUFFLE



TUCK MALT



TUCK DUST



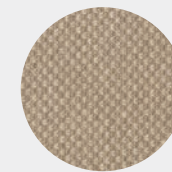
TUCK SABLE



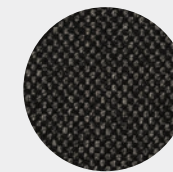
TUCK DENIM



TUCK CIDER



RAVEL DUNE



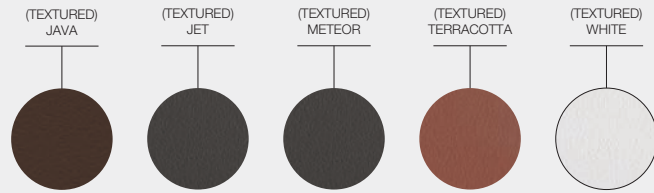
RAVEL SABLE



RAVEL GINGER

# FRAME COLOURS & MATERIALS

## POWDER COAT



## GLASS



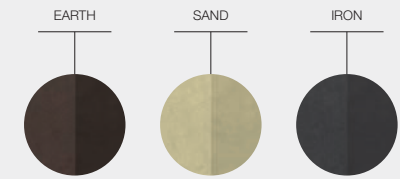
## STAINLESS STEEL



## GLAZED CERAMIC (BLOW)



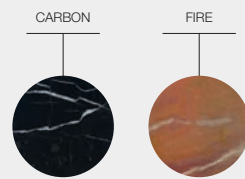
## GLAZED CERAMIC (COSO)



## CERAMIC



## STONE



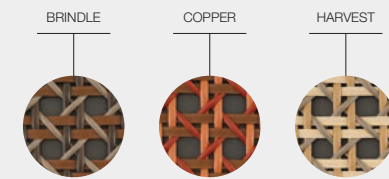
## ROPE



## GLAZED CERAMIC (KASHA)



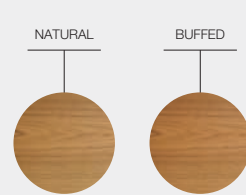
## WICKER (KAY)



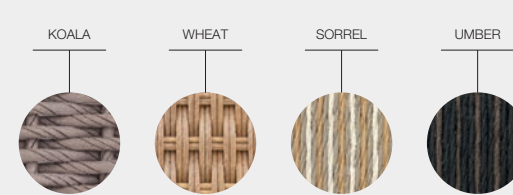
## RUGS BRAID



## TEAK



## WICKER



## WICKER (AMBIENT)



# FRAME COLOURS & MATERIALS

# IMPRINT

## INTELLECTUAL PROPERTY RIGHTS & COPYRIGHT

All Gloster collections have been exclusively designed by our company or have been developed for us by designers. All copyrights are owned by Gloster Furniture Limited. Registered designs applied for. All products carry the Gloster label and our trademark is protected by law. Infringements of our copyright by any party will be vigorously pursued. Gloster reserves the right to alter or amend the descriptions and specifications given in this publication in the light of technical developments and availability of materials.



GLOSTER FURNITURE GMBH  
ZEPPELINSTRASSE 22  
21337 LÜNEBURG, GERMANY  
TEL. +49 (0)4131 287530

GLOSTER FURNITURE LIMITED  
SUITE 214, SERENDIPITY LABS, AZTEC CENTRE, AZTEC WEST  
ALMONDSBURY, BRISTOL BS32 4TD, UNITED KINGDOM  
TEL. +44 (0)1454 631 950

[WWW.GLOSTER.COM](http://WWW.GLOSTER.COM)

2 0 2 5



**GLOSTER FURNITURE GMBH**

ZEPPELINSTRASSE 22 · 21337 LÜNEBURG · GERMANY  
TEL. +49 (0)4131 28753-0

**GLOSTER FURNITURE LIMITED**

SUITE 214 · SERENDIPITY LABS · AZTEC CENTRE, AZTEC WEST  
ALMONDSBURY · BRISTOL · BS32 4TD · UNITED KINGDOM  
TEL. +44 (0)1454 631 950

[WWW.GLOSTER.COM](http://WWW.GLOSTER.COM)  
[CONTACT@GLOSTER.COM](mailto:CONTACT@GLOSTER.COM)